



HAND AND SERVICE TOOLS

www.sunextools.com

www.sunextools.com



TABLE OF CONTENTS

	SPECIALTY SOCKETS	2
	DRIVE TRAIN APPLICATION	6
	ENGINE SERVICE TOOLS	18
	HAND TOOLS	22
	TORQUE & MEASURING TOOLS	52
	PULLERS & CLAMPS	56
	MAGNETIC PARTS TRAYS	61
	PRODUCT INDEX	63

SPECIALTY SOCKETS



1/2" DRIVE 5 POINT 13/16" IMPACT SOCKET

- > CR-MO alloy steel for long life
- > Designed for use on tamper-proof buffalo covers used by water and gas utility companies

2265PT



1/2" DRIVE DEEP 12 POINT 30MM SPINDLE NUT IMPACT SOCKET

- > CR-MO alloy steel for long life
- > 12 Point design means less wear on fasteners

2800ZD



1/2" DRIVE DEEP 12 POINT 36MM SPINDLE NUT IMPACT SOCKET

- > CR-MO alloy steel for long life
- > 12 Point design means less wear on fasteners

2802ZD



FORD DRIVE LINE IMPACT SOCKET 12MM 12 PT - 1/2" DRIVE

- > Specifically designed for drive line applications on Ford Mustang, Crown Victoria, Taurus, Explorer, Expedition, Excursion, Ranger, F150, and Mercury equivalents from 1980's to present

212ZUMDL

SPECIALTY SOCKETS



1/2" DRIVE 12 POINT 9 PIECE METRIC DRIVELINE LIMITED CLEARANCE IMPACT SOCKET SET

- > Great for most limited access fasteners
- > Includes driveline sockets for Chevrolet, Chrysler, Dodge, Ford, GMC and Jeep models
- > Remove and install:
 - Driveline bolts, torque converters, cylinder heads, 4x4 transmission casings



2695

INCLUDES:

8mm (208ZUMDL)	10mm (210ZUMDL)
11mm (211ZUMDL)	12mm (212ZUMDL)
13mm (213ZUMDL)	14mm (214ZUMDL)
15mm (215ZUMDL)	16mm (216ZUMDL)
17mm (217ZUMDL)	



1/2" DRIVE 12 POINT 7 PIECE SAE DRIVELINE LIMITED CLEARANCE IMPACT SOCKET SET

- > Great for most limited access fasteners
- > Includes driveline sockets for Chevrolet, Chrysler, Dodge, Ford, GMC and Jeep models
- > Remove and install:
 - Driveline bolts, torque converters, cylinder heads, 4x4 transmission casings



2696

INCLUDES:

5/16" (210ZUDL)	3/8" (212ZUDL)
7/16" (214ZUDL)	1/2" (216ZUDL)
9/16" (218ZUDL)	11/16" (222ZUDL)
3/4" (224ZUDL)	



3 PIECE SUNEX SUPER REDUCER SET

- > Engineered to dramatically increase durability
- > Longest lasting reducers on the market

2343

INCLUDES 3 DRIVE SIZES:

MODEL:	DRIVE SIZE:
2303	1/2"(F) x 3/8"(M)
3303	3/8"(F) x 1/4"(M)
4305	3/4"(F) x 1/2"(M)

INDIVIDUAL SUPER REDUCERS

- > Engineered to dramatically increase durability
- > Longest lasting reducers on the market



ITEM: MODEL: DRIVE SIZE:

A	2303	1/2"F x 3/8"M
B	3303	3/8"F x 1/4"M
C	4305	3/4"F x 1/2"M
D	5305	1"F x 3/4"M

SPECIALTY SOCKETS



1/4", 3/8" & 1/2" DRIVE 8 PIECE ANTENNA AND MIRROR MAINTENANCE SOCKET SET

MERCEDES, BMW, VW, GM, AUDI,
FORD, HONDA, SUBARU, MAZDA,
NISSAN, MITSUBISHI, TOYOTA,
LAND ROVER,

> Forged from CR-V alloy steel

3921

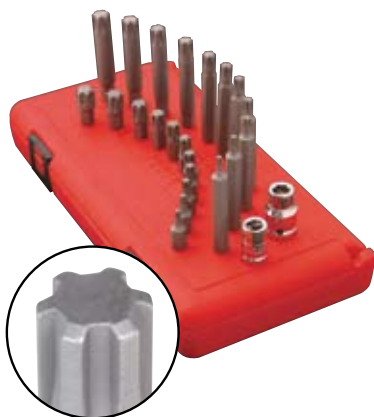
THESE INDIVIDUAL SOCKETS ARE NOT INTENDED FOR
USE WITH AN IMPACT TOOL OF ANY KIND.

⚠ WARNING: Use of this socket with an impact
tool can cause serious injury.

1/4", 3/8" & 1/2" DRIVE INDIVIDUAL ANTENNA & MIRROR MAINTENANCE SOCKETS

Model #	Type
392101	Remote Control Mirror Socket (Two-Prong) Hollow socket clears adjustment lever - 3/8" sq. dr. - services many Ford and VW vehicles
392102	Radio Trim Nut Socket (Two-Prong) Hollow socket clears adjustment lever - 1/4" sq. dr. - services some GM and Ford cars
392103	Antenna Nut Socket (Three-Prong) 11/16" external hex, 1-1/2" long - services 1987- current Chrysler vehicles
392104	Antenna Nut Socket (Two-Prong) 11/16" external hex - services 1989-90 Ford Probe, 1989-90 Mazda RX7 and 926 Nissan Stanza and Maxima
392105	Antenna Nut Socket (Four-Prong) 11/16" external hex - services 1985-1990 Ford Taurus and Mercury Sable, 1990 Lincoln Mark V
392106	Power Antenna Nut Socket (Four-Prong) 11/16" external hex, 44.5mm long - services 1977- current GM vehicles
392107	Antenna Nut Socket (Four-Prong) 11/16" external hex - services GMC 400 Pickups C and K, 1989 Lincoln Town Car and Continental, 1990 Toyota Camry and Celica, Chrysler, Mitsubishi Eclipse, Galant, and Sigma
392108	Ball Joint Socket (Four-Prong) 1/2" sq. dr. - for use on 4-5 B axles such as found on Dodge, Ford, Chevrolet, GMC and international four wheel drive trucks - adjusts the sleeve in the top of the yoke on the front suspension

SPECIALTY SOCKETS



24 PIECE RIBE BIT SET

- > Bits made from industrial S2 steel
- > M4 - M14 Bit sizes in both 30mm and 75mm lengths
- > 3/8" Dr. and 1/2" Dr. bit holders included
- > Ideal for late model German engineered vehicles for cylinder head, headlight, and transmission fill plug applications

THESE INDIVIDUAL SOCKETS ARE NOT INTENDED FOR USE WITH AN IMPACT TOOL OF ANY KIND.

⚠ WARNING: Use of this socket with an impact tool can cause serious injury.

3/8" & 1/2" DRIVE INDIVIDUAL RIBE BIT SOCKETS

9724

INCLUDES:

3/8" Dr. Bit Holder (972423)

1/2" Dr. Bit Holder (972424)

M4 - M14: 30mm & 75mm lengths

Model # (972401 to 972422)

Model #	Type
972401	M4 Ribe Bit (30mm)
972402	M5 Ribe Bit (30mm)
972403	M6 Ribe Bit (30mm)
972404	M7 Ribe Bit (30mm)
972405	M8 Ribe Bit (30mm)
972406	M9 Ribe Bit (30mm)
972407	M10 Ribe Bit (30mm)
972408	M11 Ribe Bit (30mm)
972409	M12 Ribe Bit (30mm)
972410	M13 Ribe Bit (30mm)
972411	M14 Ribe Bit (30mm)
972412	M4 Ribe Bit (75mm)
972413	M5 Ribe Bit (75mm)
972414	M6 Ribe Bit (75mm)
972415	M7 Ribe Bit (75mm)
972416	M8 Ribe Bit (75mm)
972417	M9 Ribe Bit (75mm)
972418	M10 Ribe Bit (75mm)
972419	M11 Ribe Bit (75mm)
972420	M12 Ribe Bit (75mm)
972421	M13 Ribe Bit (75mm)
972422	M14 Ribe Bit (75mm)
972423	3/8" Dr. Bit Holder Socket
972424	1/2" Dr. Bit Holder Socket

9913

INCLUDES:

7/16" (991301) 15/32" (991302)

1/2" (991303) 17/32" (991304)

9/16" (991305) 19/32" (991306)

5/8" (991307) 11/16" (991308)

23/32" (991309) 3/4" (991310)

25/32" (991311) 27/32" (991312)

29/32" (991313)



3/8" DRIVE 13 PIECE SAE WEATHERHEAD SOCKET SET

- > Used to remove and install Weatherhead fittings
- > Used in 90° elbow joint applications
- > Ideal for hydraulic hose and fitting removal and installation
- > Packaged on plastic rail for tool box storage



THESE INDIVIDUAL SOCKETS ARE NOT INTENDED FOR USE WITH AN IMPACT TOOL OF ANY KIND.

⚠ WARNING: Use of this socket with an impact tool can cause serious injury.

DRIVE TRAIN APPLICATION



3/8" DRIVE ABS PRESSURE SWITCH SOCKET DODGE, CHRYSLER, PLYMOUTH

10212

- > Forged from CR-V alloy steel
- > Designed for damage-free removal of ABS pressure switch. Removes and installs Bendix 10 ABS pressure switch on a 1990 or newer Dodge Monaco, Eagle Premier and 1991 and newer Chrysler, Plymouth and Dodge minivans

THESE INDIVIDUAL SOCKETS ARE NOT INTENDED FOR USE WITH AN IMPACT TOOL OF ANY KIND.
⚠ WARNING: Use of this socket with an impact tool can cause serious injury.



1/2" DRIVE SPANNER SOCKET FORD

10004

- > Forged from CR-V alloy steel
- > Designed for use with 1985 and later Ford F250/F350 trucks with floating rear axle

THESE INDIVIDUAL SOCKETS ARE NOT INTENDED FOR USE WITH AN IMPACT TOOL OF ANY KIND.
⚠ WARNING: Use of this socket with an impact tool can cause serious injury.



1/2" DRIVE AXLE FLANGE NUT SOCKET MERCEDES BENZ

10203

- > Forged from CR-V alloy steel
- > Removes rear axle flange grooved nuts on Mercedes Benz models 107, 114, 115, 116, 126 axles with CV joints when replacing axle seals and axle bearings

THESE INDIVIDUAL SOCKETS ARE NOT INTENDED FOR USE WITH AN IMPACT TOOL OF ANY KIND.
⚠ WARNING: Use of this socket with an impact tool can cause serious injury.



3/4" DRIVE AXLE NUT SPANNER SOCKET CHEVROLET, GMC

10205

- > Forged from CR-V alloy steel
- > Six-lug, spanner-type wrench removes and installs rear wheel bearing locknuts. Services 1954-current Chevrolet and GMC 15,000 lb. axles; 1966-current 17,000 lb. 2 speed. axles; 1965-current 15,000 lb. trailing axles

THESE INDIVIDUAL SOCKETS ARE NOT INTENDED FOR USE WITH AN IMPACT TOOL OF ANY KIND.
⚠ WARNING: Use of this socket with an impact tool can cause serious injury.

DRIVE TRAIN APPLICATION



3/4" DRIVE AXLE NUT SPANNER SOCKET CHEVROLET, GMC

10206

- > Forged from CR-V alloy steel
- > Six-lug, spanner-type wrench removes and installs rear wheel bearing locknuts; services 1954-current Chevrolet and GMC 11,000 to 13,500 lb. axles

THESE INDIVIDUAL SOCKETS ARE NOT INTENDED FOR USE WITH AN IMPACT TOOL OF ANY KIND.

⚠ WARNING: Use of this socket with an impact tool can cause serious injury.



3/4" DRIVE AXLE NUT SPANNER SOCKET CHEVROLET, GMC

10207

- > Forged from CR-V alloy steel
- > Six lug spanner type socket removes and installs rear wheel bearing locknuts on 1946-present Chevrolet and GMC 5200 and 7200 lb. axles

THESE INDIVIDUAL SOCKETS ARE NOT INTENDED FOR USE WITH AN IMPACT TOOL OF ANY KIND.

⚠ WARNING: Use of this socket with an impact tool can cause serious injury.



3/4" DRIVE RATCHETING LOCKNUT TOOL FORD TRUCKS

10636

- > Forged from CR-V alloy steel
- > Small end fits Ford 1986 to 1994 light trucks with Dana 44 front axle; large end fits 1985 and newer Ford F-150 and F-350 trucks with Dana full floating rear axle - this flip socket allows for dual application

THESE INDIVIDUAL SOCKETS ARE NOT INTENDED FOR USE WITH AN IMPACT TOOL OF ANY KIND.

⚠ WARNING: Use of this socket with an impact tool can cause serious injury.



1/2" DRIVE TRANSIT LOCK NUT TOOL FORD

10209

- > Forged from CR-V alloy steel
- > For Ford locknuts fitted on pre-1998 Ford Transit 80, 100, 115, 120 models with type 34 axles

THESE INDIVIDUAL SOCKETS ARE NOT INTENDED FOR USE WITH AN IMPACT TOOL OF ANY KIND.

⚠ WARNING: Use of this socket with an impact tool can cause serious injury.

DRIVE TRAIN APPLICATION



3/4" DRIVE BALL JOINT IMPACT SOCKET CHRYSLER CARS

10213

- > CR-MO alloy steel for long life
- > Removes and installs the ball joints used on mid-size, rear-wheel drive Chrysler cars - fits 1-59/64" ball joints



3/4" DRIVE BALL JOINT IMPACT SOCKET CHRYSLER LIGHT TRUCKS

10214

- > CR-MO alloy steel for long life
- > Removes and installs the ball joints used on Chrysler/Dodge light trucks and vans - fits 2-9/64" ball joints



1/2" DRIVE 12.5MM BRAKE CALIPER SOCKET CITROËN AND PEUGEOT

10210

- > Forged from CR-V alloy steel
- > Pentagon shaped driver applicable for use on Citroën and Peugeot calipers

THESE INDIVIDUAL SOCKETS ARE NOT INTENDED FOR USE WITH AN IMPACT TOOL OF ANY KIND.

⚠ WARNING: Use of this socket with an impact tool can cause serious injury.



3/4" DRIVE DIFFERENTIAL SOCKET MERCEDES BENZ

10204

- > Forged from CR-V alloy steel
- > Applicable for use on Mercedes Benz models 107, 114, 115, and 116 when removing the drive pinion shaft flange nut of the differential

THESE INDIVIDUAL SOCKETS ARE NOT INTENDED FOR USE WITH AN IMPACT TOOL OF ANY KIND.

⚠ WARNING: Use of this socket with an impact tool can cause serious injury.

DRIVE TRAIN APPLICATION



1/2" DRIVE 8 PIECE DRAIN/ PIPE PLUG IMPACT SOCKET SET FOR USE ON MOST VEHICLES MALE & FEMALE 7/16" - 5/8"

> CR-MO alloy steel for long life

2841

1/2" DRIVE INDIVIDUAL DRAIN/ PIPE PLUG SOCKETS MALE & FEMALE 7/16" - 5/8"

Model #	Size	Type
214FP	1/2" Drive 7/16"	Female Pipe Plug Socket
214P	1/2" Drive 7/16"	Male Pipe Plug Socket
216FP	1/2" Drive 1/2"	Female Pipe Plug Socket
216P	1/2" Drive 1/2"	Male Pipe Plug Socket
218FP	1/2" Drive 9/16"	Female Pipe Plug Socket
218P	1/2" Drive 9/16"	Male Pipe Plug Socket
220FP	1/2" Drive 5/8"	Female Pipe Plug Socket
220P	1/2" Drive 5/8"	Male Pipe Plug Socket



3/8" DRIVE 11 PIECE DRAIN / PIPE PLUG IMPACT SOCKET SET FOR USE ON MOST VEHICLES MALE 3/16" - 3/8" / FEMALE 1/4" - 3/8"

> CR-MO alloy steel for long life

3841

3/8" DRIVE INDIVIDUAL DRAIN/ PIPE PLUG SOCKETS MALE 3/16" - 3/8" / FEMALE 1/4" - 3/8"

Model #	Size	Type
304PC	3/8" Drive 3/16"	Male Pipe Plug Socket
308PC	3/8" Drive 1/4"	Male Pipe Plug Socket
309PC	3/8" Drive 9/32"	Male Pipe Plug Socket
310PC	3/8" Drive 5/16"	Male Pipe Plug Socket
311PC	3/8" Drive 11/32"	Male Pipe Plug Socket
312PC	3/8" Drive 3/8"	Male Pipe Plug Socket
308EPC	3/8" Drive 1/4"	Female Pipe Plug Socket
309EPC	3/8" Drive 9/32"	Female Pipe Plug Socket
310EPC	3/8" Drive 5/16"	Female Pipe Plug Socket
311EPC	3/8" Drive 11/32"	Female Pipe Plug Socket
312EPC	3/8" Drive 3/8"	Female Pipe Plug Socket

DRIVE TRAIN APPLICATION



1/2" DRIVE SPINDLE NUT SOCKET FORD/ DODGE 4WD VEHICLES

10200

- > Forged from CR-V alloy steel
- > Applicable for use on 1984-92 Ford Ranger and Bronco II with manual hubs; 1986-95 Ford F-Series 1/2 ton pickup trucks; full size Bronco with Dana 44 front axle; 1990-93 Dodge trucks with Dana 44 automatic hubs

THESE INDIVIDUAL SOCKETS ARE NOT INTENDED FOR USE WITH AN IMPACT TOOL OF ANY KIND.
 ⚠ WARNING: Use of this socket with an impact tool can cause serious injury.



1/2" DRIVE SPINDLE NUT SOCKET ISUZU, HONDA, JEEP J20 PICKUPS

10202

- > Forged from CR-V alloy steel
- > Services 1988-95 Isuzu Trooper, Rodeo, Amigo, and pickups; 1985-89 Honda Passport; Jeep J20 pickups with Dana 60 Axle

THESE INDIVIDUAL SOCKETS ARE NOT INTENDED FOR USE WITH AN IMPACT TOOL OF ANY KIND.
 ⚠ WARNING: Use of this socket with an impact tool can cause serious injury.



SPINDLE PULLER IMPACT SOCKET FULL SIZE FORD, GM, INTERNATIONAL, JEEP

10208

- > Forged from CR-V alloy steel
- > For use when removing the front spindle on light duty 4WD trucks. Applicable to full size Ford, GM, International, and Jeep pick-ups with Dana front Axles; also applicable to Ford Ranger and Bronco II - fits spindle thread sizes 2"-16, 1-5/8"-16, 38mm-1.5

THESE INDIVIDUAL SOCKETS ARE NOT INTENDED FOR USE WITH AN IMPACT TOOL OF ANY KIND.
 ⚠ WARNING: Use of this socket with an impact tool can cause serious injury.

DRIVE TRAIN APPLICATION



1/2" DRIVE 30MM & 36MM 12 POINT 2 PIECE SPINDLE NUT IMPACT SOCKET SET FOR USE ON MOST VEHICLES

- > CR-MO alloy steel for long life
- > For use on 30mm and 36mm spindle nut applications
- > 12 point design
- > Heavy duty blow mold case



2836Z



1/2" DRIVE 12 POINT METRIC 4 PIECE SPINDLE NUT IMPACT SOCKET SET FOR USE ON MOST VEHICLES

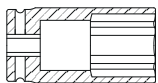
- > CR-MO alloy steel for long life
- > Set provides the most common size sockets used on today's spindle nut applications
- > 12 point design



2837

Size	Model#
30mm	2800ZD
32mm	2804ZD
34mm	2806ZD
36mm	2802ZD

1/2" DRIVE INDIVIDUAL SPINDLE NUT SOCKETS



Deep Spindle Nut

Size	Spindle Nut Deep
mm	Model#
29	2830
30	2800
32	2832
34	2834
35	2806
36	2802
38	2803



TIE ROD IMPACT SOCKET

- > CR-MO alloy steel for long life
- > Innovative, non-slip design
- > Capable of removing most bolts that have 75% of their corners stripped away

2801

DRIVE TRAIN APPLICATION



1/2" DRIVE 3 PIECE EXTRA THIN WALL METRIC DEEP WHEEL PROTECTOR IMPACT SOCKET SET

- > Durable outer sleeve and insert protects high polished wheels and lug nuts from damage
- > CR-MO alloy steel for long life
- > Packaged on convenient storage rail



2842

INCLUDES:	1/2" Drive Metric Deep
284317	Metric 17mm
284319	Metric 19mm
284321	Metric 21mm



1/2" DRIVE 3 PIECE EXTRA THIN WALL METRIC DEEP WHEEL PROTECTOR IMPACT SOCKET SET

- > Durable outer sleeve and insert protects high polished wheels and lug nuts from damage
- > 150mm (5.9") length of these extra long thin wall sockets enable usage of a standard impact wrench, rather than one with a 2" anvil
- > CR-MO alloy steel for long life



2843

INCLUDES:	1/2" Drive Metric Deep
284317	Metric 17mm
284319	Metric 19mm
284321	Metric 21mm



1/2" DRIVE 9 PIECE EXTRA THIN WALL SAE & METRIC DEEP WHEEL PROTECTOR IMPACT SOCKET SET

- > Durable outer sleeve and insert protects high polished wheels and lug nuts from damage
- > CR-MO alloy steel for long life



2849

INCLUDES:	
6 SAE Sockets:	
3/4" [lt. green] (28492)	13/16" [purple] (28494)
7/8" [green] (28496)	15/16" [brown] (28498)
1" [silver] (284910)	1-1/16" [black] (284912)
3 Metric Sockets:	
17mm [blue] (284917)	19mm [yellow] (284919)
21mm [red] (284921)	

DRIVE TRAIN APPLICATION



3/4" DRIVE 7 PIECE TRUCK PINION LOCKNUT IMPACT SOCKET SET

> 7 extra thin wall deep impact sockets for removing or installing transmission and differential end yoke lock nuts on most trucks

4667

INCLUDES:

2" (464AN)	2-1/8" (468AN)
2-1/4" (472AN)	2-3/8" (476AN)
2-1/2" (480AN)	2-5/8" (484AN)
2-3/4" (488AN)	



1/2" DRIVE 7 PIECE WHEEL BEARING LOCKNUT SET

> For use with 1/2" ratchet or breaker bar

THESE INDIVIDUAL SOCKETS ARE NOT INTENDED FOR USE WITH AN IMPACT TOOL OF ANY KIND.

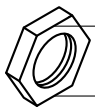
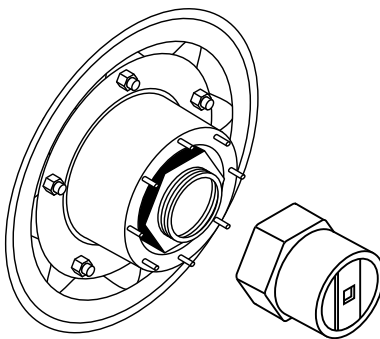
⚠ WARNING: Use of this socket with an impact tool can cause serious injury.

2847

INCLUDES:

Rounded Hex:	6PT. Hex:
2-3/8" (28477)	2-3/8" (28472)
2-1/2" (28474)	2-1/2" (28473)
2-9/16" (28476)	55mm (28471)
2-3/4" (28475)	

1/2" DRIVE INDIVIDUAL WHEEL BEARING LOCKNUT SOCKETS



Measure from flat to flat to determine the size of the locknut. Refer to the chart above to determine which socket is best for your project.



6 and 8 point locknut sockets fit rounded hex nuts found on Dana axles and some Ford trucks.

Model #	Size	Point	Model #	Size	Point
10600	2-3/32"	6	10617	4-7/8"	8
10601	2-3/8"	8	10618	2-1/4"	6
10602	2-9/16"	6	10619	2-5/8"	6
10603	2-9/16"	8	10620	2-3/4"	6
10604	3"	6	10629	2-3/4"	8
10605	3"	8	10621	3-3/8"	8
10606	3-1/4"	6	10622	3-3/4"	8
10607	3-1/4"	8	10623	3-3/4"	6
10608	3-1/2"	6	10624	3-13/16"	8
10609	3-1/2"	8	10625	2-7/8"	6
10610	3-7/8"	6	10626	2-7/8"	8
10611	3-7/8"	8	10627	3-1/8"	6
10612	4"	6	10628	3-1/8"	8
10613	4-1/8"	6	10630	4-1/2"	8
10614	4-3/8"	6	10631	5-1/4"	6
10615	4-3/8"	8	10632	4-1/8"	8
10616	4-7/8"	6	10633	4-13/16"	8

DRIVE TRAIN APPLICATION



1/2" DRIVE 9 PIECE WHEEL LOCK REMOVAL IMPACT SOCKET SET

- MOST DOMESTIC AND IMPORT
PASSENGER VEHICLES AND
LIGHT TRUCKS
- > CR-MO alloy steel for long life
 - > Easily removes most lug nuts and wheel locks on most domestic and import passenger vehicles and light trucks. Use with hand driver or impact wrench.

2840

INCLUDES:

28401	Ford & Chrysler Hubcap Lock Remover
28402	Ford Wheel Lock Remover
28403	GM "M" & "F" Body Wheel Lock Remover
28404	Oversized Wheel Lock Remover
28405	McGard Wheel Lock Remover
28406	Lug Nut Extractor Punch
28407	Chrysler Hubcap Lock Remover
28408	GM Hubcap Lock Remover
28409	GM Spline Hubcap Lock Remover



4 PIECE SAE STUD PULLER SET

- > Includes 1/4", 5/16", 3/8" and 7/16" stud removal sockets in a metal case

THESE INDIVIDUAL SOCKETS ARE NOT INTENDED FOR
USE WITH AN IMPACT TOOL OF ANY KIND.

⚠ WARNING: Use of this socket with an impact
tool can cause serious injury.

8804

Includes:

Item	Model
1/4" Stud Puller	8804-1/4
3/8" Stud Puller	8804-3/8
5/16" Stud Puller	8804-5/16
7/16" Stud Puller	8804-7/16



1/2" DRIVE 4 PIECE METRIC STUD PULLER SET

- > Includes 6, 8, 10 and 12mm stud removal sockets in a metal case

THESE INDIVIDUAL SOCKETS ARE NOT INTENDED FOR
USE WITH AN IMPACT TOOL OF ANY KIND.

⚠ WARNING: Use of this socket with an impact
tool can cause serious injury.

8804M

Includes:

Item	Model
6mm Stud Puller	8804M-6
8mm Stud Puller	8804M-8
10mm Stud Puller	8804M-10
12mm Stud Puller	8804M-12



19 PIECE SEAL AND BEARING DRIVER SET

- > Set provides proper size driver for nearly all automotive seal, bearing, or bushing installation jobs
- > Includes discs, handles, spacers and drivers
- > Range of 5/8" to 2" diameter discs is perfect for automotive service

3920

DISCS INCLUDED:

5/8"	3/4"	7/8"
1"	1-1/8"	1-1/4"
1-3/8"	1-1/2"	1-5/8"
1-3/4"	1-7/8"	2"

DRIVE TRAIN APPLICATION



18 PIECE LEFT HAND CALIPER DISC BRAKE CALIPER MASTER TOOL SET

- > Contains caliper adapters that range from 1-3/16" to 2-1/2" as well as adapters specifically designed to service Nissan, Saab, and Honda models
- > Contains a caliper rotation tool with left hand threads which are especially useful when working on 2004-2007 Ford Freestyle, 500, 2008 Taurus, and Taurus X models
- > Significantly reduces brake job completion time

3930

CALIPERS INCLUDED:

39301	Right Rotating (H020)
39302	Left Rotating (H020-1)
39303	Disc (H010)
39304	1-13/32" Adapter (H011)
39305	2" Adapter (H012)
39306	2-3/16" Adapter (H013)
39307	1-21/32" Adapter (H014)
39308	1-21/32" Adapter (H015)
39309	1-1/4" Adapter (H016)
393010	2-1/2" Adapter (H017)
393011	2-5/32" Adapter (H018)
393012	1-7/8" Brake Adapter (H019)
393013	1-3/16" Adapter (Ha)
393014	Opel Adapter (Hb)
393015	Nissan Maxima Adapter (He)
393016	Citroën Adapter (Hk)
393017	Ford Adapter (Hm)
393018	Honda Adapter (Hn)



17 PIECE PNEUMATIC BRAKE CALIPER TOOL SET

- > Trigger controlled pressing speed
- > One hand operation
- > Magnetic adapter base for secure attachment and quick change of press pads
- > Gun accepts most every competitor's press pads
- > Adapters cover nearly every application in North America through 2008

3935

CALIPERS INCLUDED:

39303	Disc (H010)
39304	1-13/32" Adapter (H011)
39305	2" Adapter (H012)
39306	2-3/16" Adapter (H013)
39307	1-21/32" Adapter (H014)
39308	1-21/32" Adapter (H015)
39309	1-1/4" Adapter (H016)
393010	2-1/2" Adapter (H017)
393011	2-5/32" Adapter (H018)
393012	1-7/8" Brake Adapter (H019)
393013	1-3/16" Adapter (Ha)
393014	Opel Adapter (Hb)
393015	Nissan Maxima Adapter (He)
393016	Citroën Adapter (Hk)
393017	Ford Adapter (Hm)
393018	Honda Adapter (Hn)



INDIVIDUAL OIL FILTER WRENCHES

- > Services 98% of vehicles in USA
- > Made in USA

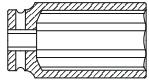


Interior View of Cups

39801	(65/67mm - 14 Flutes)
39802	(74/76mm - 15 Flutes)
39803	(76mm - 14 Flutes)
39804	(93mm - 15 Flutes)
39805	(76mm - 30 Flutes / 80mm - 15 Flutes / 93mm - 36 Flutes)

DRIVE TRAIN APPLICATION

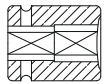
1/2" DRIVE INDIVIDUAL TRUCK WHEEL SOCKETS METRIC HEAVY DUTY



Heavy Duty Deep

Size	Heavy Duty Deep
In.	Model#
1-1/4"	240HDD

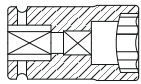
3/4" DRIVE INDIVIDUAL TRUCK WHEEL SOCKETS METRIC HEAVY DUTY



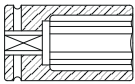
Square



Heavy Duty Square



Combination Budd Wheel



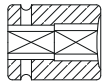
Deep Hex Budd Wheel



Extra Long

Size	Square	Double Square	Comb. Budd Wheel	Extra Long
mm	Model#	Model#	Model#	Model#
17		417MSS		
19	419MS			
20	420MS			
21		421MSS		
33				433MXL
35 X 20			43517B	
41 X 21			4121C	

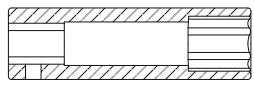
3/4" DRIVE INDIVIDUAL TRUCK WHEEL SOCKETS SAE HEAVY DUTY



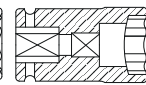
Square



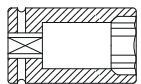
Heavy Duty Square



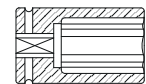
Deep Thin Wall



Combination Budd Wheel



Limited Depth Budd Wheel



Deep Hex Budd Wheel

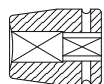


Extra Long

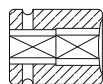
Size	Square	Heavy Duty Square	Deep Thin Wall	Comb. Budd Wheel	Limited Depth Budd Wheel	Deep Hex Budd Wheel	Extra Long
Inches	Model#	Model#	Model#	Model#	Model#	Model#	Model#
13/16	426S	426HDS					426XL
15/16	430S						
1-1/16			434DT				434XL
1-1/8			436DT				436XL
1-1/4			440DT				440XL
1-1/2					448LD	448DH	448XL
1-1/2 x 13/16				4826C			

DRIVE TRAIN APPLICATION

1" DRIVE INDIVIDUAL TRUCK WHEEL SOCKETS METRIC HEAVY DUTY



Heavy Duty Square



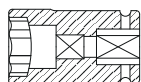
Square



Extra Long



Deep Thin Wall



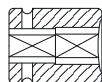
Combination Budd Wheel

Size	Square	Double Square	Deep Thin Wall	Extra Long	Comb. Budd Wheel
mm	Model#	Model#	Model#	Model#	Model#
17		517MSS			
19	519MS				
20	520MS				
21		521MSS			
33				533MEL	
41			541MDT		
35 x 17					53517
38					53820
41 x 21					54121

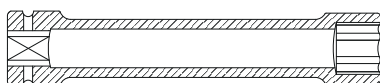
1" DRIVE INDIVIDUAL TRUCK WHEEL SOCKETS SAE HEAVY DUTY



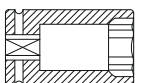
Deep Thin Wall



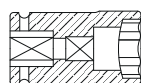
Square



Extra Long



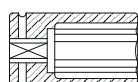
Controlled Depth



Combination Budd Wheel



Heavy Duty Square



Extra Deep

Size	Square	Deep Thin wall	Extra Long	Comb. Budd Wheel	Cont. depth	Heavy Duty Square	Extra Deep
Inches	Model#	Model#	Model#	Model#	Model#	Model#	Model#
13/16	526S					526HDS	
15/16	530S						
1-1/16		534DT					
1-1/8		536DT					
1-1/4		540DT	540EL				
1-5/16		542DT					
1-1/2		548DT			548CDS		
1-3/4							556XD
1-1/2 x 13/16				5826C			



1/2" DRIVE CRANKSHAFT PULLEY SOCKET HONDA, ACURA

10006

- > Forged from CR-V alloy steel
- > Designed for use on most Honda/Acura engines for the removal and installation of the crankshaft pulley bolt

THESE INDIVIDUAL SOCKETS ARE NOT INTENDED FOR USE WITH AN IMPACT TOOL OF ANY KIND.

⚠ WARNING: Use of this socket with an impact tool can cause serious injury.



1/2" DRIVE CRANKSHAFT TURNING SOCKET SMALL BLOCK CHEVY V8, 90° V6

10000

- > Aluminium construction
- > Designed for use on small block Chevy engines, this aluminum socket rotates the crankshaft when the harmonic balancer is off. Fits 2-9/64" ball joints

THESE INDIVIDUAL SOCKETS ARE NOT INTENDED FOR USE WITH AN IMPACT TOOL OF ANY KIND.

⚠ WARNING: Use of this socket with an impact tool can cause serious injury.



1/2" DRIVE CRANKSHAFT TURNING SOCKET BIG BLOCK CHEVY V8

10001

- > Aluminium construction
- > Designed for use on big block Chevy engines, this aluminum socket rotates the crankshaft when the harmonic balancer is off

THESE INDIVIDUAL SOCKETS ARE NOT INTENDED FOR USE WITH AN IMPACT TOOL OF ANY KIND.

⚠ WARNING: Use of this socket with an impact tool can cause serious injury.



1/2" DRIVE CRANKSHAFT TURNING SOCKET FORD, BUICK, OLDSMOBILE, PONTIAC WITH 3/16" KEYWAY

10002

- > Aluminium construction
- > Designed for use on Ford, Buick, Oldsmobile, or Pontiac with 3/16" or 1/4" keyway, this aluminum socket rotates the crankshaft when the harmonic balancer is off

THESE INDIVIDUAL SOCKETS ARE NOT INTENDED FOR USE WITH AN IMPACT TOOL OF ANY KIND.

⚠ WARNING: Use of this socket with an impact tool can cause serious injury.



5.5MM DRIVE DISTRIBUTOR MODULE SOCKET FORD

- > Forged from CR-V alloy steel
- > Designed for use on 7/32" hex retaining bolts on Ford distributor modules

10009



3/8" DRIVE FUEL FILTER BANJO BOLT IMPACT SOCKET HONDA, ACURA

- > CR-MO alloy steel for long life
- > Designed for use on most 1986 and later fuel injected Honda and Acura vehicles, this socket is designed to easily remove and install the uniquely designed banjo bolt used to attach the fuel line to the fuel filter

10005



3/8" DRIVE 6 PIECE OIL AND FUEL FILTER SOCKET SET FOR USE ON MOST VEHICLES

- > Forged from CR-V alloy steel

3671

3/8" DRIVE INDIVIDUAL OIL & FUEL FILTER SOCKETS

THESE INDIVIDUAL SOCKETS ARE NOT INTENDED FOR USE WITH AN IMPACT TOOL OF ANY KIND.

⚠ WARNING: Use of this socket with an impact tool can cause serious injury.

Model #	Type
367124	24mm Oil Filter Socket: Applicable for use on Buick with WT-V6 engines, Rendezvous Ultra, Lacrosse CSX, Cadillac WT-V6 - CTS, STS, SRX and Saturn L3000
367129	29mm Oil Filter Socket: Applicable for use on Dodge Cummins fuel filter housing 14700
367132	32mm Oil Filter Socket: Applicable for use on GM EcoTec and Saab engines
367135	35/36mm Oil Filter Socket: Applicable for use on BMW M52, M60, M62, M70, M73, MB, OM604, OM605 and OM606 engines; also fits Audi and VW models
367127	27mm Oil Filter Socket: Applicable for use on Cadillac STS 3.2 liter V6 and Mercedes Benz 1.8 liter I4 engines
367138	38mm Oil Filter Socket: Vauxhaul Vectra 2.0 liter diesel engines



1-3/16 X 1/2" DRIVE OIL PRESSURE SENDING UNIT SOCKET GM

10003

- > CR-MO alloy steel for long life
- > For use when removing or replacing oil pressure sending units on 1987 to current GM engines including 2.0L, 2.5L, 2.8L, and 3.0L used in Chevy, Buick, Oldsmobile, Pontiac, and Cadillac; 1-3/16 hex - turn with 1/2" square drive tools or 15/16" wrench



1/2" DRIVE OXYGEN SENSOR SOCKET ALL FOREIGN AND DOMESTIC VEHICLES WITH OXYGEN SENSORS

10010

- > Forged from CR-V alloy steel
- > Works on all domestic and imported vehicles with oxygen sensors; slot in socket's side allows wire clearance - 7/8" hex, 3-7/8" socket length

THESE INDIVIDUAL SOCKETS ARE NOT INTENDED FOR USE WITH AN IMPACT TOOL OF ANY KIND.

⚠ WARNING: Use of this socket with an impact tool can cause serious injury.



7 PIECE OXYGEN SENSOR SOCKET SET

2850

INCLUDES:

- > Easily removes vacuum switches, oil pressure sending units, brake light switches, and oxygen sensors on most car models
- > CR-MO alloy steel for long life

29mm pressure/ vacuum switch socket	28501
7/8" vacuum switch socket with 7.5mm gap	28502
27mm oil pressure sending unit socket	28503
7/8" vacuum switch socket with 20.6mm gap	28504
1-1/16" and 1" oil pressure sending unit socket	28505
7/8" short oxygen sensor socket	28506
7/8" hex, 1/2" double square driver	28507



5/8", 3/8" DRIVE SPARK PLUG EXTRA LONG SOCKET MODERN FOREIGN AND DOMESTIC VEHICLES WITH RECESSED SPARK PLUGS

10008

- > CR-MO alloy steel for long life
- > Length: 4.5"
- > Designed for easy removal and installation of recessed, hard to reach spark plugs that are often deep within a tube

THIS SOCKET IS NOT INTENDED FOR
USE WITH AN IMPACT TOOL OF ANY KIND.
⚠ WARNING: Use of this socket with an impact
tool can cause serious injury.



3/8" DRIVE 4 PIECE UNIVERSAL SPARK PLUG SOCKET SET

8844

INCLUDES:

- > All four sized spark plug sockets in one convenient set
- > Fully polished chrome vanadium alloy steel for durability
- > Universal joint design for easy access in confined areas
- > Rubber inserts hold spark plug securely during installation and removal
- > Includes new 9/16" size

Model:	Size:
8844-9/16	9/16"
8844-5/8	5/8"
8844-3/4	3/4"
8844-13/16	13/16"



3/8" DRIVE 7 PIECE 2-1/2" & 6" LENGTHS SPARK PLUG MASTER SOCKET SET FOR USE ON MOST VEHICLES

8845

- > Forged from CR-V alloy steel
- > For easy removal and installation of spark plug sizes common to most vehicle the spark plug socket is a normal deep socket with a small rubber piece inside of it intended to grab on to the terminal and hold the plug inside of the socket while it is maneuvered into position

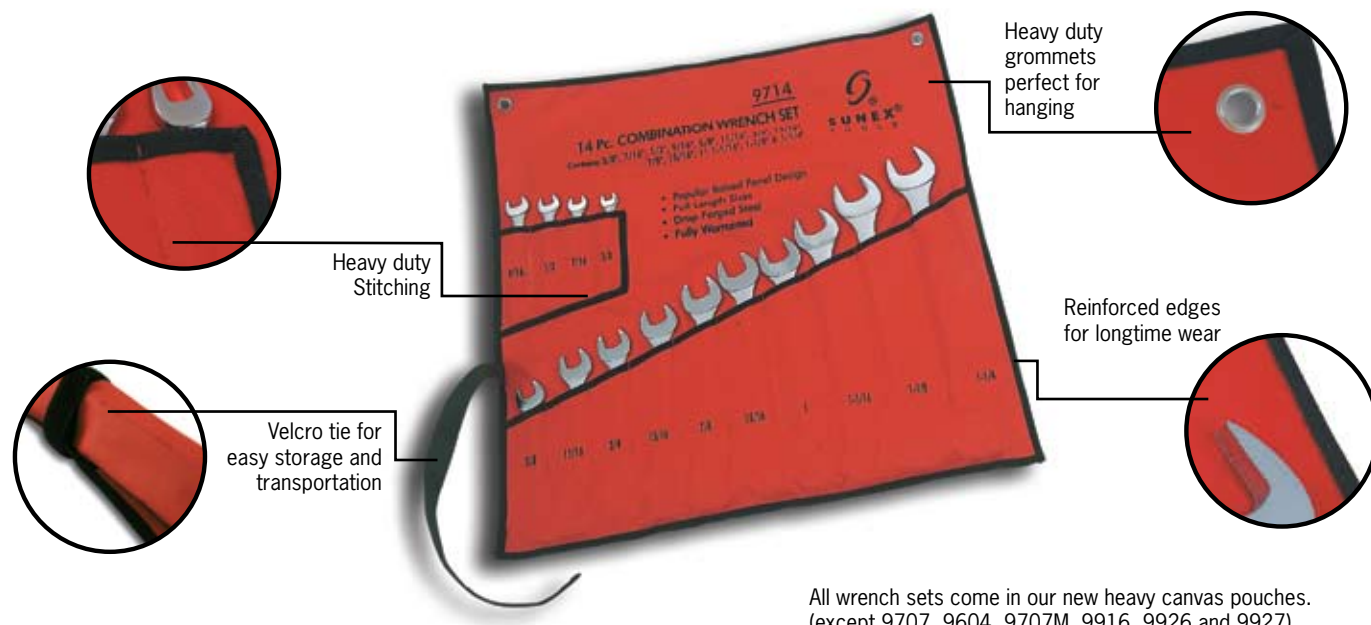
(Includes three extra deep spark plugs sockets and one thin wall spark plug socket for hard to reach plugs - for use with 3/8" drive ratchets)

THIS SOCKET SET IS NOT INTENDED FOR
USE WITH AN IMPACT TOOL OF ANY KIND.
⚠ WARNING: Use of this socket with an impact
tool can cause serious injury.

3/8" DRIVE INDIVIDUAL SPARK PLUG SOCKETS

THESE INDIVIDUAL SOCKETS ARE NOT INTENDED
FOR USE WITH AN IMPACT TOOL OF ANY KIND.
⚠ WARNING: Use of this socket with an impact
tool can cause serious injury.

Model #	Length	Type / Application
884501	2-1/2"	9/16" Spark Plug Socket - Various foreign and domestic models
884502	2-1/2"	5/8" Spark Plug Socket - Various foreign and domestic models
884503	2-1/2"	13/16" Spark Plug Socket - Various foreign and domestic models
884504	2-1/2"	16mm Thin Wall Spark Plug Socket - Honda/Acura and Toyota
884505	6"	9/16" Extra Deep Spark Plug Socket - Various foreign and domestic models
884506	6"	5/8" Extra Deep Spark Plug Socket - Various foreign and domestic models
884507	6"	13/16" Extra Deep Spark Plug Socket - Various foreign and domestic models



All wrench sets come in our new heavy canvas pouches.
(except 9707, 9604, 9707M, 9916, 9926 and 9927)



14 PIECE SAE COMBINATION WRENCH SET

- > Raised panel design
- > Made from CR-V alloy steel
- > Canvas pouch included
- > Available as set or individually



9714

SET INCLUDES:

Model	Size	Model	Size
712	3/8"	726	13/16"
714	7/16"	728	7/8"
716	1/2"	730	15/16"
718	9/16"	732	1"
720	5/8"	734	1-1/16"
722	11/16"	736	1-1/8"
724	3/4"	740	1-1/4"



7 PIECE JUMBO SAE COMBINATION WRENCH SET

- > Made from CR-V alloy steel
- > Raised panel design
- > Canvas pouch included
- > Available as set or individually



9707

SET INCLUDES:

Model	Size	Model	Size
942	1-5/16"	956	1-3/4"
944	1-3/8"	960	1-7/8"
948	1-1/2"	964	2"
952	1-5/8"		



4 PIECE SUPER JUMBO SAE COMBINATION WRENCH SET

- > High density, dropped forged alloy steel
- > Raised panel design
- > Canvas pouch included
- > Available as set or individually



9604

SET INCLUDES:

Model	Size	Model	Size
968	2-1/8"	976	2-3/8"
972	2-1/4"	980	2-1/2"



14 PIECE METRIC COMBINATION WRENCH SET

- > Raised panel design
- > Made from CR-V alloy steel
- > Canvas pouch included
- > Available as set or individually



9715

SET INCLUDES:

Model	Size	Model	Size
706M	6mm	713M	13mm
707M	7mm	714M	14mm
708M	8mm	715M	15mm
709M	9mm	716M	16mm
710M	10mm	717M	17mm
711M	11mm	718M	18mm
712M	12mm	719M	19mm



5 PIECE METRIC COMBINATION WRENCH SET

- > Raised panel design
- > Made from CR-V alloy steel
- > Canvas pouch included
- > Available as set or individually



9605M

SET INCLUDES:

Model	Size	Model	Size
920	20mm	923	23mm
921	21mm	924	24mm
922	22mm		



6 PIECE COMBINATION METRIC WRENCH SET

- > Raised panel design
- > Made from CR-V alloy steel
- > Canvas pouch included
- > Available as set or individually



9606M

SET INCLUDES:

Model	Size	Model	Size
925	25mm	929	29mm
926	26mm	930	30mm
927	27mm	932	32mm



7 PIECE JUMBO METRIC WRENCH SET

- > Made from CR-V alloy steel
- > Raised panel design
- > Canvas pouch included
- > Available as set or individually



9707M

SET INCLUDES:

Model	Size	Model	Size
933	33mm	941	41mm
934	34mm	946	46mm
936	36mm	950	50mm
938	38mm		



14 PIECE ANGLE HEAD SAE WRENCH SET

- > Fully polished drop forged alloy steel
- > 15° and 60° angled ends for added convenience
- > Canvas pouch included
- > Available as set or individually



9914

SET INCLUDES:

Model	Size	Model	Size
991401	3/8"	991408	13/16"
991402	7/16"	991409	7/8"
991403	1/2"	991410	15/16"
991404	9/16"	991411	1"
991405	5/8"	991412	1-1/16"
991406	11/16"	991413	1-1/8"
991407	3/4"	991414	1-1/4"



6 PIECE JUMBO ANGLE HEAD WRENCH SET

- > High density drop forged alloy steel for strength
- > Raised panel design
- > 15° and 60° angled ends for easy access
- > Comes with convenient metal clips for storage
- > Available as set or individually



9916

SET INCLUDES:

Model	Size	Model	Size
991601	1-3/8"	991604	1-3/4"
991602	1-1/2"	991605	1-7/8"
991603	1-5/8"	991606	2"



14 PIECE ANGLE HEAD METRIC WRENCH SET

- > Fully polished drop forged alloyed steel
- > 15° and 60° angled ends for easy access
- > Canvas pouch included
- > Available as set or individually



9914M

SET INCLUDES:

Model	Size	Model	Size
991404M	6mm	991408M	13mm
991403M	7mm	991409M	14mm
991402M	8mm	991410M	15mm
991401M	9mm	991411M	16mm
991405M	10mm	991412M	17mm
991406M	11mm	991413M	18mm
991407M	12mm	991414M	19mm



6 PIECE JUMBO ANGLE HEAD METRIC WRENCH SET

- > Fully polished drop forged alloy steel
- > 15° and 60° angled ends for easy access
- > Canvas pouch included
- > Available as set or individually



9926

SET INCLUDES:

Model	Size	Model	Size
991420M	20mm	991423M	23mm
991421M	21mm	991424M	24mm
991422M	22mm	991425M	25mm



7 PIECE JUMBO ANGLE HEAD METRIC WRENCH SET

- > 15° and 60° angled ends for easy access
- > Fully polished drop forged alloy steel
- > Canvas pouch included
- > Available as set or individually



9927

SET INCLUDES:

Model	Size	Model	Size
991426M	26mm	991430M	30mm
991427M	27mm	991431M	31mm
991428M	28mm	991432M	32mm
991429M	29mm		



14 PIECE V-GROOVE SAE COMBINATION WRENCH SET

- > Fully polished drop forged alloy steel
- > V-groove design reduces wear on fasteners
- > Canvas pouch included
- > Available as set or individually



9915

SET INCLUDES:

Model	Size	Model	Size
991512	3/8"	991526	13/16"
991514	7/16"	991528	7/8"
991516	1/2"	991530	15/16"
991518	9/16"	991532	1"
991520	5/8"	991534	1-1/16"
991522	11/16"	991536	1-1/8"
991524	3/4"	991538	1-1/4"



12 PIECE V-GROOVE METRIC COMBINATION WRENCH SET

- > Fully polished drop forged alloy steel
- > V-groove design reduces wear on fasteners
- > Canvas pouch included
- > Available as set or individually



9917M

SET INCLUDES:

Model	Size	Model	Size
991708M	8mm	991714M	14mm
991709M	9mm	991715M	15mm
991710M	10mm	991716M	16mm
991711M	11mm	991717M	17mm
991712M	12mm	991718M	18mm
991713M	13mm	991719M	19mm



5 PIECE V-GROOVE METRIC COMBINATION WRENCH SET

- > Fully polished drop forged alloy steel
- > V-groove design reduces wear on fasteners
- > Canvas pouch included
- > Available as set or individually



9918M

SET INCLUDES:

Model	Size	Model	Size
991820M	20mm	991823M	23mm
991821M	21mm	991824M	24mm
991822M	22mm		



8 PIECE METRIC V-GROOVE COMBINATION WRENCH SET

- > Fully polished drop forged alloy steel
- > V-Groove design reduces wear on fasteners
- > Canvas pouch included
- > Available as set or individually



9919M

SET INCLUDES:

Model	Size	Model	Size
991925M	25mm	991929M	29mm
991926M	26mm	991930M	30mm
991927M	27mm	991931M	31mm
991928M	28mm	991932M	32mm



11 PIECE SAE STUBBY COMBINATION WRENCH SET

- > Compact design for maximum access in confined areas
- > Fully polished drop forged alloy steel
- > Canvas pouch included
- > Available as set or individually



9930

SET INCLUDES:

Model	Size	Model	Size
993012	3/8"	993022	11/16"
993014	7/16"	993024	3/4"
993016	1/2"	993026	13/16"
993018	9/16"	993028	7/8"
993020	5/8"	993030	15/16"
		993032	1"



7 PIECE SAE AND METRIC FLARE NUT WRENCH SET

- > Both SAE & Metric sizes
- > Fully polished drop forged alloy steel
- > Canvas pouch included
- > Available as set or individually



9807

SET INCLUDES:

Model	Size
980701	1/4" x 5/16"
980702	3/8" x 7/16"
980703	1/2" x 9/16"
980704	5/8" x 11/16"
980705	10mm x 12mm
980706	13mm x 14mm
980707	15mm x 17mm



9 PIECE SAE AND METRIC FLARE NUT WRENCH SET

- > Both SAE & Metric sizes
- > Fully polished drop forged alloy steel
- > Canvas pouch included
- > Available as set or individually



9809

SET INCLUDES:

Model	Size	Model	Size
980901	1/4" x 5/16"	980905	8 x 9mm
980902	3/8" x 7/16"	980906	10 x 12mm
980903	1/2" x 9/16"	980907	13 x 14mm
980904	5/8" x 11/16"	980908	15 x 17mm
980909	19 x 21mm		



5 PIECE SAE HALF MOON WRENCH SET

- > Curved design for maximum access in confined areas
- > Fully polished drop forged alloy steel
- > Canvas pouch included
- > Available as set or individually



9935

SET INCLUDES:

Model	Size
993501	5/16" x 3/8"
993502	7/16" x 1/2"
993503	9/16" x 5/8"
993504	11/16" x 3/4"
993505	13/16" x 7/8"



5 PIECE METRIC HALF MOON WRENCH SET

- > Curved design for maximum access in confined areas
- > Fully polished drop forged alloy steel
- > Canvas pouch included
- > Available as set or individually



9935M

SET INCLUDES:

Model	Size
993501M	8mm x 10mm
993502M	11mm x 13mm
993503M	14mm x 15mm
993504M	17mm x 19mm
993505M	21mm x 22mm



10 PIECE METRIC STUBBY COMBINATION WRENCH SET

- > Compact design for maximum access in confined areas
- > Fully polished drop forged alloy steel
- > Canvas pouch included
- > Available as set or individually



9930M

SET INCLUDES:

Model	Size	Model	Size
993010M	10mm	993015M	15mm
993011M	11mm	993016M	16mm
993012M	12mm	993017M	17mm
993013M	13mm	993018M	18mm
993014M	14mm	993019M	19mm



5 PIECE METRIC S-STYLE WRENCH SET

- > Curved design for maximum access in confined areas
- > Fully polished drop forged alloy steel
- > Canvas pouch included
- > Available as set or individually



9940M

SET INCLUDES:

Model	Size
994000M	10mm x 11mm
994002M	12mm x 13mm
994003M	14mm x 15mm
994004M	16mm x 17mm
994005M	18mm x 19mm



5 PIECE SAE S-STYLE WRENCH SET

- > Curved design for maximum access in confined areas
- > Fully polished drop forged alloy steel
- > Canvas pouch included
- > Available as set or individually



9940

SET INCLUDES:

Model	Size
994001	5/16" x 3/8"
994002	7/16" x 1/2"
994003	9/16" x 19/32"
994004	5/8" x 11/16"
994005	11/16" x 3/4"



5 PIECE SAE DOUBLE BOX WRENCH SET

- > Fully polished drop forged alloy steel
- > Canvas pouch included
- > Available as set or individually



9950

SET INCLUDES:

Model	Size
995001	3/8" x 7/16"
995002	1/2" x 9/16"
995003	5/8" x 11/16"
995004	3/4" x 13/16"
995005	7/8" x 15/16"



5 PIECE METRIC DOUBLE BOX WRENCH SET

- > Fully polished drop forged alloy steel
- > Canvas pouch included
- > Available as set or individually



9950M

SET INCLUDES:

Model	Size
995001M	10mm x 11mm
995002M	12mm x 14mm
995003M	13mm x 15mm
995004M	16mm x 18mm
995005M	17mm x 19mm



5 PIECE SAE 10 DEGREE OFFSET WRENCH SET

- > Fully polished drop forged alloy steel
- > Available as set or individually
- > Canvas pouch included



9945

SET INCLUDES:

Model	Size
994501	3/8" x 7/16"
994502	1/2" x 9/16"
994503	5/8" x 11/16"
994504	3/4" x 13/16"
994505	7/8" x 1"



5 PIECE METRIC 10 DEGREE OFFSET WRENCH SET

- > Fully polished drop forged alloy steel
- > Canvas pouch included
- > Available as set or individually



9945M

SET INCLUDES:

Model	Size
994501M	10mm x 11mm
994502M	12mm x 14mm
994503M	13mm x 15mm
994504M	16mm x 18mm
994505M	17mm x 19mm



8 PIECE FLARE NUT CROWFOOT WRENCH SET

- > 3/8" Drive
- > Fully polished drop forged alloy steel
- > Mounted on a convenient storage rail
- > Also available individually



9708

SET INCLUDES:

Model	Size	Model	Size
970802	3/8"	980810	5/8"
970804	7/16"	970812	11/16"
970806	1/2"	970814	3/4"
970808	9/16"	970818	7/8"



10 PIECE METRIC FLARE NUT CROWFOOT WRENCH SET

- > 3/8" Drive
- > Fully polished drop forged alloy steel
- > Mounted on a convenient storage rail
- > Also available individually



9710M

SET INCLUDES:

Model	Size	Model	Size
971010	10mm	971015	15mm
971011	11mm	971016	16mm
971012	12mm	971017	17mm
971013	13mm	971018	18mm
971014	14mm	971019	19mm



7 PIECE JUMBO STRAIGHT CROWFOOT WRENCH SET

- > 1/2" Drive
- > Fully polished drop forged alloy steel
- > Blow mold storage tray
- > Also available individually
- > Sizes below not in set—sold individually:

Model	Size
97730	15/16"
97741	1-5/16"
97742	1-7/16"



9720

SET INCLUDES:

Model	Size	Model	Size
97732	1"	97734	1-1/16"
97736	1-1/8"	97738	1-3/16"
97740	1-1/4"	97760	1-3/8"
97744	1-1/2"		



6 PIECE JUMBO METRIC CROWFOOT WRENCH SET

- > 1/2" Drive
- > Fully polished drop forged alloy steel
- > Blow mold storage tray
- > Also available individually



9722

SET INCLUDES:

Model	Size	Model	Size
97746	1-5/8"	97752	2"
97748	1-3/4"	97754	2-1/8"
97750	1-7/8"	97756	2-1/4"



8 PIECE JUMBO METRIC STRAIGHT CROWFOOT WRENCH SET

- > 1/2" Drive
- > Fully polished drop forged alloy steel
- > Mounted on storage rail for convenience
- > Also available individually



9730

SET INCLUDES:

Model	Size	Model	Size
97324	24mm	97328	28mm
97325	25mm	97329	29mm
97326	26mm	97330	30mm
97327	27mm	97332	32mm



7 PIECE JUMBO METRIC STRAIGHT CROWFOOT WRENCH SET

- > 1/2" Drive
- > Fully polished drop forged alloy steel
- > Mounted on a convenient storage rail
- > Also available individually



9740

SET INCLUDES:

Model	Size	Model	Size
97434	34mm	97441	41mm
97435	35mm	97442	42mm
97436	36mm	97446	46mm
97438	38mm		



44 PIECE 1/4" DR. SAE AND METRIC CHROME SOCKET SET

- > Set features most popular sizes in both SAE and metric sockets in standard and deep lengths
- > Fine tooth ratchet head features retaining ball to secure sockets and push button for easy socket release
- > Radius corner socket design grips fastener wall instead of corners resulting in less wear on fastener and socket

9144

SET INCLUDES:

1/4" Dr Pro Ratchet

1/4" Dr. Thumbwheel Ratchet

Universal Joint

1/4" Dr. 2" and 6" Extensions

1/4" Dr. Adapters:
1/4"F-3/8"M & 3/8"F-1/4"M

1/4" Dr. 6Pt. Deep SAE Sockets:
3/16", 7/32", 1/4", 9/32", 5/16",
11/32", 3/8", 7/16", 1/2", 9/16"

1/4" Dr. 6Pt. Standard Metric Sockets:
4mm, 5mm, 5.5mm, 6mm, 7mm,
8mm, 9mm, 10mm, 11mm, 12mm,
13mm, 14mm, 15mm



47 PIECE 3/8" DR. SAE AND METRIC CHROME SOCKET SET

- > Set features most popular sizes in both SAE and metric sockets in standard and deep lengths
- > Fine tooth ratchet head features retaining ball to secure sockets and push button for easy socket release
- > Radius corner socket design grips fastener wall instead of corners resulting in less wear on fastener and socket

9147

SET INCLUDES:

3/8" Dr Pro Ratchet

3/8" Dr. 3" and 6" Extensions

3/8" Dr. 6Pt. SAE Standard Sockets:
1/4", 5/16", 3/8", 7/16", 3/8", 7/16",
1/2", 9/16", 5/8", 11/16", 3/4",
13/16", 7/8"

3/8" Dr. 6Pt. Deep SAE Sockets:
3/8", 7/16", 3/8", 7/16", 1/2", 9/16",
5/8", 11/16", 3/4", 13/16", 7/8"

3/8" Dr. 6Pt. Standard Metric Sockets:
6mm, 7mm, 8mm, 9mm, 10mm,
11mm, 12mm, 13mm, 14mm, 15mm,
16mm, 17mm, 18mm, 19mm

3/8" Dr. 6Pt. Deep Metric Sockets:
6mm, 7mm, 8mm, 9mm, 10mm,
11mm, 12mm, 13mm, 14mm, 15mm,
16mm, 17mm, 18mm, 19mm



48 PIECE 1/2" DR. SAE AND METRIC CHROME SOCKET SET

- > Set features most popular sizes in both SAE and metric sockets in standard and deep lengths
- > Fine tooth ratchet head features retaining ball to secure sockets and push button for easy socket release
- > Radius corner socket design grips fastener wall instead of corners resulting in less wear on fastener and socket

9148

SET INCLUDES:

1/2" Dr Pro Ratchet

1/2" Dr. 3" and 6" Extensions

1/2" Dr. 6Pt. SAE Standard Sockets:
7/16", 1/2", 9/16", 5/8", 11/16",
3/4", 13/16", 7/8", 15/16", 1",
1-1/16", 1-1/8"

1/2" Dr. 6Pt. Deep SAE Sockets:
1/2", 9/16", 5/8", 11/16", 3/4",
13/16", 7/8", 15/16"

1/2" Dr. 6Pt. Standard
Metric Sockets: 10mm, 11mm,
12mm, 13mm, 14mm, 15mm, 16mm,
17mm, 18mm, 19mm, 20mm, 21mm,
22mm, 23mm, 24mm

16" Dr. 6Pt. Deep Metric Sockets:
10mm, 11mm, 12mm, 13mm, 14mm,
15mm, 16mm, 17mm, 18mm, 19mm



2 PIECE 1/4" AND 3/8" DRIVE ADJUSTABLE T-HANDLE SPEED WRENCH SET

- > T-Handle design provides maximum torque without power tools
- > Features an anodized adjustable speed grip with four positions for great control on any application
- > Ergonomic rubberized handle provides ultimate comfort and control

9727



5 PIECE MULTI-PURPOSE PLIERS SET

- > Induction hardened cutting edges
- > Cushioned grip for comfort
- > Made of carbon steel
- > Canvas pouch included
- > Available as set or individually

3041

SET INCLUDES:

Model	Size
30411	10" Water Pump Pliers, Groove Joint
30412	7" Diagonal Cutter
30413	8" Long Nose Pliers
30414	8" Slip Joint Pliers
30415	8" Linesman Pliers



INDIVIDUAL ADJUSTABLE WRENCHES

- > Metric and SAE scales on wrench head for precise adjustment
- > Cushioned grip for comfort

Model	Size
30406	6" Adjustable Wrench
30408	8" Adjustable Wrench
304010	10" Adjustable Wrench
304012	12" Adjustable Wrench



20.5" GROOVE JOINT PLIERS

- > Cushioned grip for comfort
- > Made of carbon steel
- > Ideal for heavy duty applications
- > Canvas pouch included

3044



PROFESSIONAL ALL PURPOSE MINI PLIERS

- > Miniature design allows for maximum maneuverability in confined areas
- > Spring loaded design for easy operation
- > Compact, convenient canvas zipper storage case

Model	
30451	Mini End Cutting Pliers
30452	Mini Long Needle Nose Pliers
30453	Mini Flat Nose Pliers
30454	Mini Combination Pliers
30455	Mini Bent Nose Pliers
30456	Mini Diagonal Nose Pliers
30457	Mini Round Nose Pliers
30458	Mini Diagonal Long Nose Pliers
30459	Mini Thin Flat Nose Pliers
304510	Mini Long Nose Pliers



3 PIECE BOX JOINT PLIERS SET

- > Cushioned grip for comfort
- > Made of carbon steel
- > Canvas pouch included
- > Available as set or individually

3042

SET INCLUDES:

Model	Size
30428	8" Box Joint Pliers
304210	10" Box Joint Pliers
304212	12" Box Joint Pliers



3 PIECE GROOVE JOINT PLIERS SET

- > Cushioned grip for comfort
- > Made of carbon steel
- > Canvas pouch included
- > Available as set or individually

3043

SET INCLUDES:

Model	Size
30438	8" Groove Joint Pliers
304312	12" Groove Joint Pliers
304316	16" Groove Joint Pliers



PISTOL GRIP PLIERS

- > Pistol grip handle allows for hard to reach applications
- > Made of carbon steel

Model	Size
30461	11.5" Long Nose Pliers
30462	10" Snub Nose Crimping Pliers
30463	10" Crimping Pliers



LOCKING FLEXIBLE HOSE CLAMP PLIERS

- > 24" flexible neck cable for hard to reach areas
- > Clamps lock in open position
- > Removes plastic and metal self-tightening (11/16" - 2-1/2" diameter) hose clamps
- > Extended clamp on allows for added extension
- > Lifetime warranty (does not include cable and spring)

3720



4 PIECE 11" NEEDLE NOSE PLIERS SET

- > Pliers with straight, 20°, 45° and 90° angled noses
- > Heat treated forged alloy steel for strength and performance
- > Extra long design for access into limited clearance areas
- > Soft comfort grip handles
- > Heavy duty canvas pouch for convenient storage
- > Available as a set or individually

3600

SET INCLUDES:

Model	Size
3601	90° plier
3602	45° plier
3603	Straight plier
3604	Curved plier



3 PIECE 11" HOSE GRIPPER PLIERS SET

- > Extra long for access into limited clearance areas
- > Soft comfort grip handles
- > Heat treated forged alloy steel for strength and performance
- > Heavy duty canvas pouch for convenient storage
- > Available as a set or individually

3703

SET INCLUDES:

Model	Size
3707	5/16" Hose gripper
3708	1/2" Hose gripper
3709	3/4" Hose gripper



3 PIECE 11" SPECIALTY PLIERS SET

- > Soft comfort grip handles
- > Heat treated forged alloy steel for strength and performance
- > Extra long for access into limited clearance areas
- > Heavy duty canvas pouch for convenient storage
- > Available as a set or individually

3704

SET INCLUDES:

Model	Size
3710	Diagonal cutter
3711	3/8"-3/4" Slip joint hose gripper
3712	3/4"-1-1/4" Slip joint hose gripper



3 PIECE 16" HOSE GRIPPER PLIERS SET

- > Extra long for access into limited clearance areas
- > Soft comfort grip handles
- > Heat treated forged alloy steel for strength and performance
- > Heavy duty canvas pouch for convenient storage
- > Available as a set or individually

3705

SET INCLUDES:

Model	Size
3713	5/16" Hose gripper
3714	1/2" Hose gripper
3715	3/4" Hose gripper



4 PIECE 16" NEEDLE NOSE PLIERS SET

- > Extra long for access into limited clearance areas
- > Soft comfort grip handles
- > Heat treated forged alloy steel for strength and performance
- > Heavy duty canvas pouch for convenient storage
- > Available as a set or individually

3706

SET INCLUDES:

Model	Size
3716	90° Angled plier
3717	45° Angled plier
3718	Straight plier
3719	Curved plier



10 PIECE SNAP RING PLIER SET

- > For use with both internal and external snap rings
- > Made of heat treated CR-MO steel for strength and durability
- > Insulated vinyl grips for comfort and control
- > Convenient blow mold case with carrying handle
- > Available individually

3007

SET INCLUDES:

Model	Size
30070	5.5" Bend plier with .038" Tip
30071	6" Straight plier with .038" Tip
30072	5.5" Bend plier with .047" Tip
30073	6" Straight plier with .047" Tip
30074	7.5" Bend plier with .070" Tip
30075	8" Straight plier with .070" Tip
30076	8.5" Bend Plier with .090" Tip
30077	9" Straight Plier with .090" Tip
30078	5" Hook tool
30079	5" Pick tool



8 PIECE PROFESSIONAL SCREWDRIVER SET (BLACK HANDLES)

- > Includes 5 flat tip drivers and 3 Phillips tip drivers
- > Hardened chrome vanadium shafts
- > Vapor blasted magnetic tips
- > Hex bolsters on most sizes for extra turning power

9800

SET INCLUDES:

Model	Size
98001	3/8" x 8"
98002	5/16" x 6"
98003	1/4" x 4"
98004	3/16" x 3"
98005	1/4" x 1-1/2"
98006	#2 Phillips x 4"
98007	#1 Phillips x 3"
98008	#2 Phillips x 1-1/2"



8 PIECE PROFESSIONAL SCREWDRIVER SET (ORANGE HANDLES)

- > Includes 5 flat tip drivers and 3 Phillips tip drivers
- > Hardened chrome vanadium shafts
- > Vapor blasted magnetic tips
- > Hex bolsters on most sizes for extra turning power

9806

SET INCLUDES:

Model	Size
98061	3/8" x 8"
98062	5/16" x 6"
98063	1/4" x 4"
98064	3/16" x 3"
98065	1/4" x 1-1/2"
98066	#2 Phillips x 4"
98067	#1 Phillips x 3"
98068	#2 Phillips x 1-1/2"



10 PIECE PROFESSIONAL SCREWDRIVER AND MINI PICK SET

- > Comfort grip handle
- > Hardened chrome vanadium shafts
- > Vapor blasted magnetic tips
- > Hex bolster on large size screwdrivers for maximum turning power

9830

SET INCLUDES:

983001	#1 Phillips x 3"	Screwdriver
983002	#2 Phillips x 1-1/2"	Screwdriver
983003	#2 Phillips x 4"	Screwdriver
983004	3/16"x3"	Slotted Screwdriver
983005	1/4"x1-1/2"	Slotted Screwdriver
983006	1/4"x4"	Slotted Screwdriver
983007	5/16"x6"	Slotted Screwdriver
983008	3/8"x8"	Slotted Screwdriver
983009	Mini Hook	
983010	Mini Pick	



20 PIECE INSULATED SCREWDRIVER SET WITH INTERCHANGEABLE DRIVERS

- > A must have if you work on electricity or on static sensitive devices
- > Meet IEC 60900 and Din specifications
- > Dielectrically tested at 10,000 volts AC for guaranteed 1,000 volt protection

9820

SET INCLUDES:

98200	INSULATED HANDLE	
98201	T8	STAR
98202	T10	STAR
98203	T15	STAR
98204	T20	STAR
98205	T25	STAR
98206	T30 (2)	STAR
98207	2.5	SLOTTED
98208	3.5	SLOTTED
98209	5.5	SLOTTED
98210	6.5	SLOTTED
98211	PZ0	POZIDRIVE
98212	PZ1	POZIDRIVE
98213	PZ2	POZIDRIVE
98214	PH0 (2)	PHILLIPS
98215	PH1 (2)	PHILLIPS
98216	PH2	PHILLIPS



12 PIECE PROFESSIONAL ALL PURPOSE SCREWDRIVER SET

- > Comfort grip handle
- > Hardened chrome vanadium shafts
- > Vapor blasted magnetic tips
- > Hex bolster on large size screwdrivers for maximum turning power

9831

SET INCLUDES:

983101	#1 Phillips x 3" Screwdriver
983102	#2 Phillips x 1-1/2" Screwdriver
983103	#2 Phillips x 4" Screwdriver
983104	3/16"x3" Slotted Screwdriver
983105	1/4"x1-1/2" Slotted Screwdriver
983106	1/4"x4" Slotted Screwdriver
983107	5/16"x6" Slotted Screwdriver
983108	3/8"x8" Slotted Screwdriver
983109	2.0 x 50mm Slotted Precision Screwdriver
983110	3.0 x 50mm Slotted Precision Screwdriver
983111	#0 (3.0) x 50mm Phillips Precision Screwdriver
983112	#1 (4.0) x 50mm Phillips Precision Screwdriver



7 PIECE SAE NUT DRIVER SET

- > Comfort grip handle
- > Hardened chrome vanadium shafts
- > Hex bolstered shafts for maximum turning power
- > Hollow shafts allow for deep applications



9832

SET INCLUDES:

983201	3/16" x 4" Nutdriver
983202	1/4" x 4" Nutdriver
983203	5/16" x 4" Nutdriver
983204	11/32" x 4" Nutdriver
983205	3/8" x 4" Nutdriver
983206	7/16" x 4" Nutdriver
983207	1/2" x 4" Nutdriver



7 PIECE METRIC NUT DRIVER SET

- > Comfort grip handle
- > Hardened chrome vanadium shafts
- > Hex bolstered shafts for maximum turning power
- > Hollow shafts allow for deep applications



9832M

SET INCLUDES:

983201M	5mm x 4" Nutdriver
983202M	6mm x 4" Nutdriver
983203M	7mm x 4" Nutdriver
983204M	8mm x 4" Nutdriver
983205M	9mm x 4" Nutdriver
983206M	10mm x 4" Nutdriver
983207M	11mm x 4" Nutdriver



22 PIECE PROFESSIONAL SCREWDRIVER SET

- > Hardened chrome vanadium shafts
- > Vapor blasted magnetic tips
- > Assorted neon colors for identification and convenience
- > Packaged in heat sealed blister pack
- > Includes:
 - 9 Standard screwdrivers
 - 5 Phillips
 - 5 Star bit
 - 3 Specialty screwdrivers

9822

SET INCLUDES:

Model	Size
Black	
98221	3/8" x 10" Slotted
98222	5/16" x 8" Slotted
98223	1/8" x 3" Slotted
98225	5/32" x 4" Slotted
98226	3/16" x 4" Slotted
98227	3/16" x 6" Slotted
98229	1/4" x 6" Slotted
98236	3" x #0 Phillips
98240	6" x #3 Phillips
98241	Tack Puller
98242	Scratch Awl
98243	5/32" x 4" w/screw holder
98025	1/4" x 1-1/2" Stubby Slotted
98023	1/4" x 4" Slotted
99026	4" x #2 Phillips
99067	3" x #1 Phillips
99068	1/4" x 1-1/2" #2 Stubby Phillips
Orange	
98235	T25
98231	T30
98232	T10
98233	T15
98234	T20
98235	T25

8 PIECE PROFESSIONAL PICK SET

- > Comfort grip handle
- > Hardened chrome vanadium shafts

9835

SET INCLUDES:

983501	10" Scratch Awl
983502	10" 90 Degree Hook
983503	10" Round Hook
983504	10" Double Angle Hook
983505	4" Scratch Awl
983506	4" 90 Degree Hook
983507	4" Round Hook
983508	4" Double Angle Hook





3 PIECE PROFESSIONAL PRY BAR SET

- > "No-slip" grip handle design allows for maximum leverage
- > Hardened, tempered blades provide ultimate strength and durability
- > Available as set or individually

9803

SET INCLUDES:

9812	12"	9817	17"
9825	25"		



INDIVIDUAL PRY BARS

- > "No-slip" grip handle design allows for maximum leverage
- > Hardened, tempered blades provide ultimate strength and durability
- > Available as set or individually

MODEL DESCRIPTION

9812	12" Professional Pry Bar
9817	17" Professional Pry Bar
9825	25" Professional Pry Bar
9833	31" Professional Pry Bar
9837	37" Professional Pry Bar



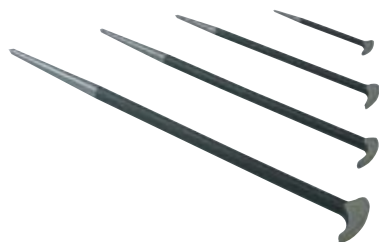
4 PIECE PROFESSIONAL PRY BAR SET

- > Made of heat treated alloy steel
- > Heat resistant comfort grip handle
- > Ground and polished pry bar blade edges
- > Available as set or individually

9704

SET INCLUDES:

Model	Size	Model	Size
9704-8	8"	9704-18	18"
9704-12	12"	9704-24	24"



4 PIECE PRY BAR SET

- > Hook & point design
- > Made of chrome vanadium steel
- > Machined and hardened tips
- > Available as set or individually

9804

SET INCLUDES:

Model	Size	Model	Size
9804-6	6"	9804-16	16"
9804-12	12"	9804-20	20"



22" TO 32" EXTENDABLE PRYBAR

9805

- > Extends from 22" to 32"
- > Patented interlock system with 20° offset head for leverage
- > Pointed chisel on handle end for alignment
- > High durability chrome vanadium construction
- > Matte finish enhances grip



34" TO 52" EXTENDABLE PRYBAR

9810

- > Extends from 34" to 52"
- > Patented interlock system with 20° offset head for leverage
- > Pointed chisel on handle end for alignment
- > High durability chrome vanadium construction
- > Matte finish enhances grip



16" INDEXING PRYBAR

9816

- > Indexing head locks in five positions: 80°, 105°, 130°, 155° & straight
- > Indexable to 180° for maximum leverage when you need it most
- > Spring loaded release mechanism makes changing head positions effortless
- > Exceeds ANSI specifications for strength



18" INDEXING PRYBAR

9818

- > Indexing head locks in five positions: 80°, 105°, 130°, 155° & straight
- > Indexable to 180° for maximum leverage when you need it most
- > Spring loaded release mechanism makes changing head positions effortless
- > Exceeds ANSI specifications for strength



3 PIECE FLEXIBLE PICKUP TOOL SET

9813

SET INCLUDES:

1/4" Bit Driver

1/4" Socket Driver

2 in 1 Magnetic Claw Pick-Up Tool

- > Flexible ends bend to desired angles to enable quick removal of screw clamps
- > Extra long 24" length shafts with total flexibility provide access to those hard to reach areas
- > 1/4" Bit Socket Driver accepts all standard bits
- > 1/4" Socket Driver can be used with all 1/4" sockets and bit sockets
- > Pick-up tool can be used as a claw or magnet to enable easy retrievals in hard to reach areas



2 PIECE 1/4" DRIVE MINI MAGNETIC RATCHET AND BIT DRIVER

- > Made from high strength chrome vanadium steel
- > Feature push button quick-release
- > Designed for use in tight or confined spaces

9725

SET INCLUDES:

1/4" Magnetic Ratcheting Bit Driver

1/4" Magnetic Mini Ratchet



38 PIECE MINI RATCHET AND BIT SET

- > Durable aluminum case for easy, compact storage
- > 36 bits to accommodate any application
- > Quick release extension bar for hard to reach applications
- > Includes:
 - (1) Aluminum case
 - (1) Quick release extension bar
 - (1) Ratchet handle, 72 teeth, CR-V, chrome plated
 - (36) Bits, S2

Made with Premium S2 Steel

9726

INCLUDES 36 S2 BITS:

SL	1/8"	5/32"	3/16"	1/4"
PH:	#1 (2pc)	#2 (2pc)	#3 (2pc)	
PZ:	#1 (2pc)	#2 (2pc)	#3 (2pc)	
Hex:	5/64"	3/32"	1/8"	
	5/32"	3/16"	1/4"	
Torx:	T10 (2pc)	T15 (2pc)	T20 (2pc)	
	T25 (2pc)	T27 (2pc)	T30 (2pc)	
	T40 (2pc)			



1/2" DRIVE 8 PIECE BIT SET WITH IMPACT DRIVER

- > Used to loosen hard-to-turn nuts, or bolts
- > Bit holder contains 1/2" and 5/16" hex for Phillips and Flat screwdriver bits
- > Handle design prevents possibility of hitting hand with hammer when striking the impact driver

9828

INCLUDES 8 BITS:

No.2 Phillips Bit:	1-3/8" long, 5/16" Hex
No.2 Phillips Bit:	3-1/8" long, 5/16" Hex
No.3 Phillips Bit:	1-3/8" long, 5/16" Hex
No.3 Phillips Bit:	3-1/8" long, 5/16" Hex
5/16" wide x 1-3/8" long, 5/16" Hex slotted	
5/16" wide x 3-1/8" long, 5/16" Hex slotted	
3/8" wide x 1-3/8" long, 5/16" Hex slotted	
3/8" wide x 3-1/8" long, 5/16" Hex slotted	



1/4" DRIVE 29 PIECE TOOL KIT WITH RATCHETING GEARLESS DRIVER

- > Gearless driver with bit storage in handle
- > 1/4" Drive bit holder
- > Bit adapter
- > Forward & reverse ratcheting
- > Comes in durable blow mold case

9829

SET INCLUDES:

Drive Type	Size
Phillips	#0, #1, #2, #3
Torx	T10, T15, T20, T25, T30, T40
Square	#0, #1, #2
Slotted	1/8", 5/32", 3/16", 7/32", 1/4"
Pozi	#1, #2, #3
Hex	5/64", 3/32", 7/64", 1/8", 9/64"



45 PIECE BIT SET WITH 1/4" T-HANDLE BIT DRIVER

- > Quick change T-handle bit driver
- > Bits made from high quality S2 steel
- > Heavy duty blow molded case for convenient storage

9745

SET INCLUDES:

(1)	T-Handle Bit Driver
(1)	Extension
(36)	Bits, S2
(3)	Phillips: #1, #2, #3
(3)	Pozi Drive: #1, #2, #3
(6)	Slotted: 3.5, 4.5, 5.5, 6.5, 7, 8
(12)	Star Bits: T5, T6, T7, T8, T9, T10, T15, T20, T25, T27, T30, T40
(3)	Square: #1, #2, #3
(9)	Tamperproof Hex: 1.5, 2, 2.5, 3, 4, 5, 6, 7, 8
(4)	Hex: 3, 4, 5, 6
(3)	Nut Setter: 7, 8, 10



9 PIECE 1/4" DRIVE STUBBY STAR DRIVE SET

- > Bits made of high quality S2 steel
- > Can be used with any 1/4" drive hand tool
- > Heavy duty blow mold case provides convenient storage

9717

SET INCLUDES:

97171	1/4" Stubby Star Bit Socket, T8
97172	1/4" Stubby Star Bit Socket, T9
97173	1/4" Stubby Star Bit Socket, T10
97174	1/4" Stubby Star Bit Socket, T15
97175	1/4" Stubby Star Bit Socket, T20
97176	1/4" Stubby Star Bit Socket, T25
97177	1/4" Stubby Star Bit Socket, T27
97178	1/4" Stubby Star Bit Socket, T30
97179	1/4" Stubby Star Bit Socket, T40



1/4" DRIVE 9 PIECE STUBBY PHILLIPS AND SLOTTED BIT SET

- > Bits made from high quality S2 steel
- > Can be used with any 1/4" drive hand tool

9919

SET INCLUDES:

Phillips: #0 #1 #2 #3

Slotted: 1/8" 3/16" 1/4" 5/16" 3/8"

1/4" DRIVE INDIVIDUAL STUBBY PHILLIPS AND SLOTTED BITS

Model #	Type
99190	1/4" X #0 Stubby Phillips Screwdriver Bit
99191	1/4" X #1 Stubby Phillips Screwdriver Bit
99192	1/4" X #2 Stubby Phillips Screwdriver Bit
99193	1/4" X #3 Stubby Phillips Screwdriver Bit
99194	1/4" X 1/8" Stubby Slotted Screwdriver Bit
99195	1/4" X 3/16" Stubby Slotted Screwdriver Bit
99196	1/4" X 1/4" Stubby Slotted Screwdriver Bit
99197	1/4" X 5/16" Stubby Slotted Screwdriver Bit
99198	1/4" X 3/8" Stubby Slotted Screwdriver Bit



3 PIECE MAGNETIC UNIVERSAL JOINT SET

- > Forged from CR-V alloy steel
- > Magnetic tips to help secure sockets
- > High polish chrome construction

THESE INDIVIDUAL SOCKETS ARE NOT INTENDED FOR USE WITH AN IMPACT TOOL OF ANY KIND.

⚠ WARNING: Use of this socket with an impact tool can cause serious injury.

8850

SET INCLUDES:

885025	1/4" DR MAGNETIC UNIVERSAL JOINT
885045	3/8" DR MAGNETIC UNIVERSAL JOINT
885050	1/2" DR MAGNETIC UNIVERSAL JOINT



9 PIECE MAGNETIC CHROME UNIVERSAL JOINT AND EXTENSION SET

- > Forged from CR-V alloy steel
- > Magnetic tips to help secure sockets
- > High polish chrome construction

THESE INDIVIDUAL SOCKETS ARE NOT INTENDED FOR USE WITH AN IMPACT TOOL OF ANY KIND.

⚠ WARNING: Use of this socket with an impact tool can cause serious injury.

8855

SET INCLUDES:

88551	1/4" DR 2" MAGNETIC EXT BAR
88552	1/4" DR 6" MAGNETIC EXT BAR
88553	3/8" DR 3" MAGNETIC EXT BAR
88554	3/8" DR 6" MAGNETIC EXT BAR
88555	1/2" DR 5" MAGNETIC EXT BAR
88556	1/2" DR 10" MAGNETIC EXT BAR



1/4", 3/8" & 1/2" DRIVE 13 PIECE TAMPER PROOF STAR SOCKET SET

- > Made from CR-V alloy steel for maximum strength
- > Mounted on storage rail for convenience
- > Available individually

THESE INDIVIDUAL SOCKETS ARE NOT INTENDED FOR USE WITH AN IMPACT TOOL OF ANY KIND.

⚠ WARNING: Use of this socket with an impact tool can cause serious injury.

9716

SET INCLUDES:

Model	Size	Model	Size
97167	T7H	971630	T30H
97168	T8H	971640	T40H
971610	T10H	971645	T45H
971615	T15H	971650	T50H
971620	T20H	971655	T55H
971625	T25H	971660	T60H
971627	T27H		



3/8" DRIVE 8 PIECE TRIPLE SQUARE BIT SOCKET SET

- > Made from CR-V alloy steel for maximum strength
- > Convenient metal clip storage rail

THESE INDIVIDUAL SOCKETS ARE NOT INTENDED FOR USE WITH AN IMPACT TOOL OF ANY KIND.

⚠ WARNING: Use of this socket with an impact tool can cause serious injury.

9719

INCLUDES 3/8" DRIVE:

Model	Size	Model	Size
97194	4mm	971910	10mm
97195	5mm	971912	12mm
97196	6mm	971914	14mm
97198	8mm	971916	16mm



1/4", 3/8" & 1/2" DRIVE 12 PIECE INTERNAL STAR SOCKET SET

- > Chrome vanadium steel
- > Mounted on storage rail for convenience
- > Available individually

THESE INDIVIDUAL SOCKETS ARE NOT INTENDED FOR USE WITH AN IMPACT TOOL OF ANY KIND.

⚠ WARNING: Use of this socket with an impact tool can cause serious injury.

9711A

SET INCLUDES:

Model	Size	Model	Size
9711A10	T10	9711A40	T40
9711A15	T15	9711A45	T45
9711A20	T20	9711A47	T47
9711A25	T25	9711A50	T50
9711A27	T27	9711A55	T55
9711A30	T30	9711A60	T60





1/4", 3/8" & 1/2" DRIVE 11 PIECE EXTERNAL STAR SOCKET SET

- > Chrome vanadium steel
- > Mounted on storage rail for convenience
- > Available individually

THESE INDIVIDUAL SOCKETS ARE NOT INTENDED FOR USE WITH AN IMPACT TOOL OF ANY KIND.

⚠ WARNING: Use of this socket with an impact tool can cause serious injury.

9911A

SET INCLUDES:

Model	Size	Model	Size
9911A4	E4	9911A10	E10
9911A5	E5	9911A12	E12
9911A6	E6	9911A14	E14
9911A7	E7	9911A16	E16
9911A8	E8	9911A18	E18
9711A20	E20		



1/4", 3/8" & 1/2" DRIVE 13 PIECE FEMALE STAR SOCKET SET

- > CR-V alloy steel for long life
- > Convenient metal clip storage rail
- > Available individually

THESE INDIVIDUAL SOCKETS ARE NOT INTENDED FOR USE WITH AN IMPACT TOOL OF ANY KIND.

⚠ WARNING: Use of this socket with an impact tool can cause serious injury.

9911B

SET INCLUDES:

Model	Size	Model	Size
9911A4	E4	9911A10	E10
9911A5	E5	9911A12	E12
9911A6	E6	9911A14	E14
9911A7	E7	9911A16	E16
9911A8	E8	9911A18	E18
9711A20	E20	9911A22	E22
9911A24	E24		



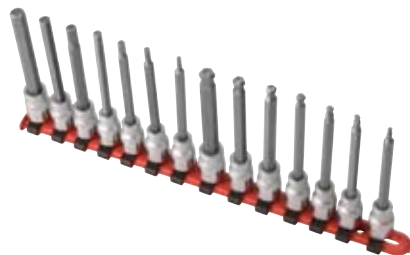
9 PIECE 1/4" DRIVE UNIVERSAL STAR CHROME SOCKET SET

- > E4-E8 in 1/4" square drive
- > E10-E16 in 3/8" square drive
- > Perfect for hard to reach Torx fasteners on steering columns, airbags, or transmissions

9912

SET INCLUDES:

Model	Size
991204	1/4" Dr. E4
991205	1/4" Dr. E5
991206	1/4" Dr. E6
991208	1/4" Dr. E8
991210	3/8" Dr. E10
991212	3/8" Dr. E12
991214	3/8" Dr. E14
991216	3/8" Dr. E16



14 PIECE 3/8" DRIVE LONG SAE BALL HEX AND HEX BIT SOCKET SET

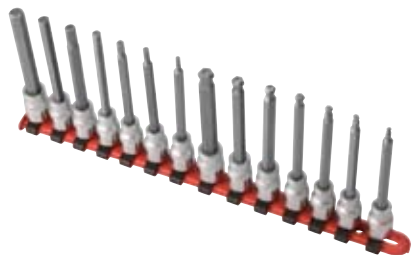
- > Ball ends provide improved access in tight spaces and difficult angles
- > Long design provides added reach and maximum torque
- > Speed fastening and reduce stripping
- > Packaged in a slide, clip rail, for easy storage



9920

SET INCLUDES:

9970	3/8" Dr. Long Ball Hex Bit Socket, 1/8"
9971	3/8" Dr. Long Ball Hex Bit Socket, 5/32"
9972	3/8" Dr. Long Ball Hex Bit Socket, 3/16"
9973	3/8" Dr. Long Ball Hex Bit Socket, 7/32"
9974	3/8" Dr. Long Ball Hex Bit Socket, 1/4"
9975	3/8" Dr. Long Ball Hex Bit Socket, 5/16"
9976	3/8" Dr. Long Ball Hex Bit Socket, 3/8"
9977	3/8" Dr. Long Hex Bit Socket, 1/8"
9978	3/8" Dr. Long Hex Bit Socket, 5/32"
9979	3/8" Dr. Long Hex Bit Socket, 3/16"
9980	3/8" Dr. Long Hex Bit Socket, 7/32"
9981	3/8" Dr. Long Hex Bit Socket, 1/4"
9982	3/8" Dr. Long Hex Bit Socket, 5/16"
9983	3/8" Dr. Long Hex Bit Socket, 3/8"



14 PIECE 3/8" DRIVE LONG METRIC BALL HEX AND HEX BIT SOCKET SET

- > Ball ends provide improved access in tight spaces and difficult angles
- > Long design provides added reach and maximum torque
- > Speed fastening and reduce stripping
- > Packaged in a slide, clip rail, for easy storage



9920M

SET INCLUDES:

9970M	3/8" Dr. Long Ball Hex Bit Socket, 3mm
9971M	3/8" Dr. Long Ball Hex Bit Socket, 4mm
9972M	3/8" Dr. Long Ball Hex Bit Socket, 5mm
9973M	3/8" Dr. Long Ball Hex Bit Socket, 6mm
9974M	3/8" Dr. Long Ball Hex Bit Socket, 7mm
9975M	3/8" Dr. Long Ball Hex Bit Socket, 8mm
9976M	3/8" Dr. Long Ball Hex Bit Socket, 10mm
9977M	3/8" Dr. Long Hex Bit Socket, 3mm
9978M	3/8" Dr. Long Hex Bit Socket, 4mm
9979M	3/8" Dr. Long Hex Bit Socket, 5mm
9980M	3/8" Dr. Long Hex Bit Socket, 6mm
9981M	3/8" Dr. Long Hex Bit Socket, 7mm
9982M	3/8" Dr. Long Hex Bit Socket, 8mm
9983M	3/8" Dr. Long Hex Bit Socket, 10mm

TORQUE & MEASURING TOOLS



1/2" DRIVE 5 PIECE TORQUE LIMITING EXTENSION SET FOR USE ON MOST VEHICLES

- > Made of flexible spring steel that stops turning when the required torque has been reached
- > This set contains the most popular sizes and torque ratings needed in the automotive service industry; torque limiting extensions often extend the life of thin wall impact sockets by limiting the torque to the required rating - available as a set or individually

2450

1/2" DRIVE INDIVIDUAL TORQUE LIMITING EXTENSIONS

Model #	Type
2465	65 ft. lbs. Extension / 90 Nm
2480	80 ft. lbs. Extension / 110 Nm
24100	100 ft. lbs. Extension / 135 Nm
24120	120 ft. lbs. Extension / 160 Nm
24140	140 ft. lbs. Extension / 190 Nm



1/2" DRIVE 10 PIECE TORQUE LIMITING SOCKET SET FOR USE ON MOST VEHICLES

- > Made of flexible spring steel that stops turning when the required torque has been reached
- > Torque limiting socket set will assist in the tightening wheel nuts to the correct torque on most makes and models of foreign and domestic cars, light trucks and vans; these tools are designed for use with a 1/2" impact wrench - available as a set or individually

2880

1/2" DRIVE INDIVIDUAL TORQUE LIMITING SOCKETS

Model #	Type
21755M	17mm / 55 ft. lbs. / 75 Nm
21780M	17mm / 80 ft. lbs. / 110 Nm
22180M	21mm / 80 ft. lbs. / 110 Nm
21910M	19mm (3/4") / 100 ft. lbs. / 135 Nm
21965M	19mm (3/4") / 65 ft. lbs. / 90 Nm
21980M	19mm (3/4") / 80 ft. lbs. / 110 Nm
22212M	22mm (7/8") / 120 ft. lbs. / 160 Nm
22214M	22mm (7/8") / 140 ft. lbs. / 190 Nm
22610	13/16" / 100 ft. lbs. / 135 Nm
23014	15/16" / 140 ft. lbs. / 190 Nm

TORQUE & MEASURING TOOLS

3/4" & 1" DRIVE INDIVIDUAL TRUCK TORQUE EXTENSIONS & SOCKETS

- > Provides the ability to torque inner and outer cap nuts and flange nuts on heavy duty trucks
- > Torque sockets and extensions allow user to ensure that lug nuts are tightened to the required torque specification
- > Designed to extend life of thin wall impact sockets
- > Each socket and extension is individually packaged



INCLUDES:

3/4" Drive truck torque extensions:

A 4315TE 175 Ft/Lbs Extension

B 4320TE 250 Ft/Lbs Extension

C 4325TE 350 Ft/Lbs Extension

D 4330TE 475 Ft/Lbs Extension

1" Drive truck torque extensions and sockets:

E 5315TE 175 Ft/Lbs Extension

F 5320TE 250 Ft/Lbs Extension

G 5325TE 350 Ft/Lbs Extension

H 5330TE 400 Ft/Lbs Extension

I 5335TE 475 Ft/Lbs Extension

J 5340TE 550 Ft/Lbs Extension

K 5345TE 650 Ft/Lbs Extension

L 533TS 33mm x 475 Ft/Lbs Socket

M 540TS 1-1/4" Socket

N 548TS 1-1/2" Socket



TPMS SENSOR KIT

- > For use in installation and removal of TPMS sensors
- > Includes chrome vanadium 11mm x 12mm flip socket and 2" extension
- > Also available separately:
 - Flip Socket - part # 1819CS
 - 2" Extension - part # 1819CE

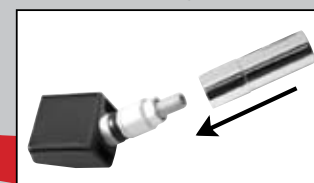
1819C

1819CS 11mm x 12mm Flip Socket

1819CE 2" Extension



Sunex Tools® TPMS Sensor Kit works great for installation and removal of wheel sensors for tire pressure monitoring.



Wheel sensor not included

TORQUE & MEASURING TOOLS



6 PIECE 1/4" DRIVE TPMS SENSOR TOOL KIT

- > Contains all tools needed for repair and replacement of TPMS sensors
- > 1/4" drive torque screwdriver, valve core tool, 1/4" drive 11x12mm chrome flip socket, 2" extension, T10 and T20 star bit sockets
- > Packaged in a heavy duty blow mold case for easy storage

1819CK

SET INCLUDES:

1/4" Dr. Torque Screwdriver

Valve Core Tool

1/4" Dr. 11x12mm Chrome Flip Socket

2" Extension

T10 Star Bit Sockets

T20 Star Bit Sockets



10-80 FT-LB 3/8" DRIVE TORQUE WRENCH

- > Accuracy within + or - 3%
- > Guaranteed to meet or exceed federal spec # GGW-00686
- > CR-MO steel ratchet gears for long life
- > All parts, including shaft, are heat treated, carbonized, quenched and twice tempered for long life and accurate performance
- > Nickel and chrome plated sandblasted shaft to reduce metal fatigue
- > Metric scale included
- > Housed in a convenient blow mold storage case
- > Warranty on calibration: 90 days

9702A

Length (in.) 10.75

Weight (lbs.) 2.3



10-150 FT-LB 1/2" DRIVE TORQUE WRENCH

- > Accuracy within + or - 3%
- > Guaranteed to meet or exceed federal spec # GGW-00686
- > CR-MO steel ratchet gears for long life
- > All parts, including shaft, are heat treated, carbonized, quenched and twice tempered for long life and accurate performance
- > Nickel and chrome plated sandblasted shaft to reduce metal fatigue
- > Metric scale included
- > Housed in a convenient blow mold storage case
- > Warranty on calibration: 90 days

9701A

Length (in.) 18.25

Weight (lbs.) 3.6



30-250 FT-LB 1/2" DRIVE TORQUE WRENCH

- > Accuracy within + or - 3%
- > Guaranteed to meet or exceed federal spec # GGW-00686
- > CR-MO steel ratchet gears for long life
- > All parts, including shaft, are heat treated, carbonized, quenched and twice tempered for long life and accurate performance
- > Nickel and chrome plated sandblasted shaft to reduce metal fatigue
- > Metric scale included
- > Housed in a convenient blow mold storage case
- > Warranty on calibration: 90 days

9703B

Length (in.) 24.75

Weight (lbs.) 6.3

TORQUE & MEASURING TOOLS



CIRCUIT TESTER

- > New, full-size comfortable acetate handle lights when circuit is good
- > Lead remains flexible in low temperatures

Replacement bulb & spring - RS4003

4001

Voltage Range (V)

6-12



DISC BRAKE MICROMETER

- > Measuring surfaces are precision ground and lapped for accuracy
- > Deep throat design is perfect for today's larger sized rotors
- > 1" standard included to ensure long time accuracy
- > Housed in a convenient blow mold storage case

6010

Measuring Range (in.) 0.300 - 1.300



6"/150MM DIAL CALIPER

- > Measuring surfaces are precision ground and lapped for accuracy
- > Raised sliding surfaces prevents defacement and wear of clear, black engraved graduations
- > Graduations are photo engraved from a glass master plate for maximum accuracy
- > Jaws designed for outside, inside and step measurements
- > Extra large, shockproof dial for easy reading
- > Easy zero point re-adjustment
- > Housed in a convenient blow mold storage case
- > Hardened stainless steel throughout with satin chrome finish

6013

SAE Graduations (in.) .001

Metric Graduations (mm) .05

PULLERS & CLAMPS

Provides extra heavy duty grip and versatility for hard to pull parts

Drop forged, chrome vanadium steel pullers can be used for pulling on both interiors and exteriors

Jaws assemble and disassemble easily for convenient, multi-task pulling



TWO WAY



THREE WAY



INTERNAL



2 TON CAPACITY 4-WAY, 2 JAW REVERSIBLE PULLER

- > Can be assembled with standard or long reach for maximum versatility
- > Ideal for pulling smaller gears, bearings, pulleys and other press fit parts
- > Internal or external pulling capability

3905

Maximum reach (in.)	3.375
Maximum spread (in.)	4



2 TON CAPACITY 8-WAY, 2-3 JAW REVERSIBLE PULLER

- > Can be assembled to make a two or three jaw puller with standard or long reach
- > Jaws are reversible to make four styles of puller
- > Ideal for pulling smaller gears, bearings, pulleys and other press fit parts

3906

Maximum reach (in.)	3.375
Maximum spread (in.)	4



2 TON CAPACITY 2-3 JAW GEAR PULLER

- > Forged from quality, heat treated, steel for maximum pulling power
- > Can be assembled to make a two or three jaw puller when additional stability is needed
- > Reversible jaw design for added versatility and a broader range of pulling capability
- > Small size allows for pulling power in confined areas

3919

Maximum Reach (in.)	3-3/8
Maximum Spread (in.)	4-3/4
Minimum Spread (in.)	2



5 TON CAPACITY 8-WAY, 2-3 JAW REVERSIBLE PULLER

- > Can be assembled to make a two or three jaw puller when additional stability is needed
- > Reversible jaw design for added versatility and a broader range of pulling capability
- > Ideal for pulling gears, bearings, pulleys and other press fit parts

3908

Maximum reach (in.)	5.5
Maximum spread (in.)	7



5 TON CAPACITY 4-WAY, 2-3 JAW REVERSIBLE PULLER

- > Can be assembled to make a two or three jaw puller when additional stability is needed
- > Reversible jaw design for added versatility and a broader range of pulling capability
- > Ideal for pulling gears, bearings, pulleys and other press fit parts

3907

Maximum reach (in.)	3.25
Maximum spread (in.)	4.75

PULLERS & CLAMPS



2 TON CAPACITY 4" REVERSIBLE 2-3 JAW GEAR PULLER

- > Patented design
- > Can be assembled to make a two or three jaw puller when additional stability is needed
- > Reversible jaw design for added versatility and a broader range of pulling capability
- > Ideal for pulling gears, bearings, pulleys, and other press fit parts

3913

Maximum Reach (in.)	4
Maximum Spread (in.)	4
Minimum Spread (in.)	2



5 TON CAPACITY 7" REVERSIBLE 2-3 JAW GEAR PULLER

- > Patented design
- > Can be assembled to make a two or three jaw puller when additional stability is needed
- > Reversible jaw design for added versatility and a broader range of pulling capability
- > Ideal for pulling gears, bearings, pulleys, and other press fit parts

3917

Maximum Reach (in.)	7
Maximum Spread (in.)	7
Minimum Spread (in.)	2



HARMONIC BALANCE PULLER

- > Heavy duty flange type puller
- > Quickly and easily pulls harmonic balancers, timing gears and other parts with bolt circle diameters from 1-1/2" to 4-5/8"
- > Works on most automobiles, large and small, foreign and domestic
- > Ideal for pulling parts with tapped holes like flywheels, gears and pulleys

3901

Diameter Range (in.)	1.5 - 4.625
----------------------	-------------

PULLERS & CLAMPS



2 PIECE SPRING COMPRESSOR

3903

- > Ideal for removal and installation of auto and light truck coil springs
- > Strong steel jaws securely hook into coil springs
- > Use on or off the vehicle
- > Acme rod turning screws for strength and accurate adjustment



3 PIECE STRUT & COIL COMPRESSOR

3904

- > Durable plastic coating
- > Ideal for removal and installation of auto and light truck coil springs
- > Strong steel jaws securely hook into coil springs
- > Use on or off the vehicle



PILOT BEARING PULLER

3916

- > Designed to pull flywheel pilot bearings in confined spaces where a slide hammer puller cannot be used
- > Applicable for use on most models with engine in chassis

Jaw Spread (in.)	1 to 1-1/2
I.D. Reach (in.)	3/4



REVERSIBLE SLIDE HAMMER PULLER

3918

- > Versatile puller that is great for pulling applications involving gears, bearings, outer races, grease retainers, and oil seals
- > Reversible 2/3 jaw may be used to perform inside pulling jobs as well as outside pulling jobs

Hammer Weight (lbs.)	2-1/2
2/3 Way Head Length (in.)	27

PULLERS & CLAMPS



10 TON CAPACITY HYDRAULIC GEAR PULLER SET

- > CR-MO alloy steel jaws for greater strength and performance
- > Provides up to 10 tons of pulling force with hydraulic ram
- > Makes 8 different pulling combinations for total versatility
- > Packaged in a blow molded case for ease of transportation

3909

Total Pulling Combinations	8
Pulling Force (tons)	10



STEERING WHEEL PULLER

- > Specialized puller set for steering wheel, pulley and fly wheel puller
- > Works on most GM, Ford and Chrysler cars
- > Can also be used as a two or three way puller to remove pulleys and flywheel from small engines and snowmobiles

3900



PROFESSIONAL SLIDE HAMMER PULLER SET

- > Jaws can be set up for 2 or 3 jaw internal or external pulling
- > Eases removal of flange-type axles, oil seals, bearings and other press fit parts
- > Heavy duty steel carrying case
- > Puller radius: 1.5mm

3911

Includes:

5 lb. heavy duty slide hammer
8 function int. or ext. 3 jaw puller
Internal or external 2 jaw puller
Puller hook
Rear axle puller
Dent puller
Special grip wrench adaptor: 1.75mm



STEEL C-CLAMPS

- > Provides sure, non-slip clamping on all shapes
- > Drop-forged steel for greater strength and durability
- > Zinc-plated acme thread screw for accurate control

1202-1203

Sizes Available:	Model #
3"	1203
4"	1204

MAGNETIC PARTS TRAYS



MIGHTY MAG® ROUND MAGNETIC PARTS TRAY

- > Stainless steel tray
- > Heavy duty rubber covered magnet that will not scratch metal
- > Tray is fully magnetized to hold metal fasteners, etc.
- > Can be used upside down or on side of vehicle

8810

Diameter (in.) 3.25



MIGHTY MAG® RECTANGULAR MAGNETIC PARTS TRAY

- > Stainless steel tray
- > Two heavy duty rubber covered magnets that will not scratch metal
- > Tray is fully magnetized to hold metal fasteners, etc.
- > Can be used upside down or on side of vehicle

8812

Dimensions (in.) 9.5 x 5.5



MIGHTY MAG® RED RECTANGULAR MAGNETIC PARTS TRAY

- > Stainless steel tray with red enamel finish
- > Two heavy duty rubber covered magnets that will not scratch metal
- > Tray is fully magnetized to hold metal fasteners, etc.
- > Can be used upside down or on side of vehicle

8813

Dimensions (in.) 9.5 x 5.5



MIGHTY MAG® EXTENDED RECTANGULAR MAGNETIC PARTS TRAY

- > Stainless steel tray
- > Three heavy duty rubber covered magnets that will not scratch metal
- > Tray is fully magnetized to hold metal fasteners, etc.
- > Can be used upside down or on side of vehicle

8814

Dimensions (in.) 14.25 x 6.5



MIGHTY MAG® SQUARE MAGNETIC PARTS TRAY

- > Stainless steel tray
- > 4 heavy duty rubber covered magnets that will not scratch metal
- > Tray is fully magnetized to hold metal fasteners, etc.
- > Can be used upside down or on side of vehicle

8817

Dimensions (in.) 11 x 11.5

SUNEX TOOLS® WARRANTY PROGRAM

Sunex Tools® Impact Sockets, Wrenches, Screwdrivers, Specialty Tools, and Vises carry a LIFETIME warranty- effective for as long as you own the product. This warranty does not apply to items that have been misused, abused, altered in any way, or worn out from use. Some adapters, reducers, and extra thin wall impact sockets are sold without warranty.

Sets: Sunex Tools® Lifetime Warranty on Sets applies to the individual parts within the set. If one part is deemed to be defective we will replace that part and not the complete set.

Sunex Tools® Impact Sockets, Wrenches, Screwdrivers, Specialty Tools, and Vises:

These products carry a LIFETIME warranty- effective for as long as you own the product. Sunex International, Inc. will repair or replace at our option, any part or unit which proves to be defective in material or workmanship. Some adapters, reducers, and extra thin wall impact sockets are sold without warranty.

Chrome Vanadium Sockets: All Sunex Tools® sockets are clearly marked with the material from which they are manufactured. Sockets intended for use with hand operated tools are made from Chrome-Vanadium steel. These sockets are not designed for use with impact tools of any kind. Doing so will void the warranty on these sockets.

A

Abs Pressure Switch Sockets	6
Adjustable T-Handle Speed Wrenches	35
Adjustable Wrenches	36
Angle Head Combination Wrenches	24, 25 & 26
Antenna & Mirror Sockets	4
Axle Flange Nut Sockets	6
Axle Nut Spanner Sockets	6 & 7

B

Ball Hex Bit Sockets	50
Ball Joint Impact Sockets	8
Bearing Puller	59
Brake Caliper Socket Sets	15
Brake Caliper Sockets	8

C

C-Clamps	60
Chrome Socket Sets	34 & 35
Circuit Testers	55
Combination Wrenches	22, 23 & 24
Crankshaft Sockets	18
Crowfoot Wrenches	32 & 33

D

Dial Calipers	55
Differential Sockets	8
Disc Brake Micrometers	55
Distributor Sockets	19
Double Box Wrenches	30
Drain/Pipe Plug Impact Sockets	9
Drive Line Impact Sockets	2 & 3

F

Flare Nut Wrenches	28
Fuel Filter Impact Sockets	19

H

Half Moon Wrenches	28 & 29
Hammer Puller	59 & 60
Harmonic Balance Puller	58
Hydraulic Gear Puller	60

I

Impact Drivers	45
--------------------------	----

M

Magnetic Parts Dishes	61
Magnetic Universal Joint & Extensions	47

N

Nut Drivers	41
-----------------------	----

O

Offset Wrenches	31
Oil & Fuel Filter Sockets	19
Oil Filter Wrenches	15
Oil Pressure Sending Unit Sockets	20
OxygEn Sensor Sockets	20

P

Pick Up Tools	44
Picks	42
Pliers	35, 36, 37 & 38
Pry Bars	43 & 44
Pullers	56, 57, 58, 59 & 60

R

Ratchet & Bit Drivers	45
Ratcheting Gearless Drivers	45
Ratcheting Locknut Sockets	7
Ribe Bit Sockets	5

S

Screwdrivers	39, 40, 41 & 42
Seal & Bearing Drivers	14
Spanner Sockets	6
Spark Plug Sockets	21
Spindle Nut Impact Sockets	2
Spindle Nut Sockets	10 & 11
Spindle Puller Impact Sockets	10
Spring Compressor	57
S-Style Wrenches	29 & 30
Star Socket Sets	49 & 50
Steering Wheel Puller	60
Strut & Coil Compressor	59
Stubby Combination Wrenches	27 & 29
Stubby Phillips & Slotted Bits	47
Stubby Star Bit Drivers	46
Stud Pullers	14
Super Reducers	3

T

T-Handle Bit Drivers	46
Tie Rod Impact Sockets	11
Torque Limiting Sockets & Extensions	52 & 53
Torque Wrenches	54
TPMS Sensor Kits	53 & 54
Transet Locknut Sockets	7
Triple Square Bit Sets	48
Truck Pinion Locknut Impact Sockets	13
Truck Wheel Sockets	16 & 17

U

Universal Star Chrome Sockets	49
---	----

V

V-Groove Combination Wrenches	26 & 27
---	---------

W

Weatherhead Sockets	5
Wheel Bearing Locknut Sockets	13
Wheel Lock Removal Impact Sockets	14
Wheel Protector Impact Sockets	12

PRODUCT INDEX

Model #	Page	Model #	Page	Model #	Page	Model #	Page	Model #	Page
712.....	22	1203.....	60	3709.....	38	8819.....	59	9830.....	40
714.....	22	1204.....	60	3710.....	38	8844.....	21	9831.....	41
716.....	22	2303.....	3	3711.....	38	8845.....	21	9832.....	41
718.....	22	2343.....	3	3712.....	38	8850.....	47	9833.....	43
720.....	22	2450.....	52	3713.....	38	8855.....	47	9835.....	42
722.....	22	2465.....	52	3714.....	38	9144.....	34	9837.....	43
724.....	22	2480.....	52	3715.....	38	9147.....	34	9912.....	49
726.....	22	2695.....	3	3716.....	38	9148.....	35	9913.....	5
728.....	22	2696.....	3	3717.....	38	9604.....	23	9914.....	24
730.....	22	2800.....	11	3718.....	38	9704.....	43	9915.....	26
732.....	22	2801.....	11	3719.....	38	9707.....	22	9916.....	25
734.....	22	2802.....	11	3720.....	37	9708.....	32	9919.....	47
736.....	22	2803.....	11	3841.....	9	9714.....	22	9920.....	50
740.....	22	2806.....	11	3900.....	59	9715.....	23	9926.....	25
920.....	23	2830.....	11	3901.....	58	9716.....	48	9927.....	26
921.....	23	2832.....	11	3903.....	59	9717.....	46	9930.....	27
922.....	23	2834.....	11	3904.....	59	9719.....	48	9935.....	28
923.....	23	2837.....	11	3905.....	56	9720.....	37	9940.....	30
924.....	23	2840.....	14	3906.....	56	9722.....	33	9945.....	31
925.....	24	2841.....	9	3907.....	57	9724.....	5	9950.....	30
927.....	24	2842.....	12	3908.....	57	9725.....	45	9970.....	50
929.....	24	2843.....	12	3909.....	60	9726.....	45	9971.....	50
930.....	24	2847.....	13	3911.....	60	9727.....	35	9972.....	50
932.....	24	2849.....	12	3913.....	58	9730.....	33	9973.....	50
933.....	24	2850.....	20	3916.....	59	9740.....	33	9974.....	50
934.....	24	2880.....	52	3917.....	58	9745.....	46	9975.....	50
936.....	24	3007.....	39	3918.....	59	9800.....	39	9976.....	50
936.....	24	3041.....	35	3919.....	57	9803.....	43	9977.....	50
938.....	24	3042.....	36	3920.....	14	9804.....	43	9978.....	50
941.....	24	3043.....	37	3921.....	4	9805.....	44	9979.....	50
942.....	22	3044.....	36	3930.....	15	9806.....	39	9980.....	50
944.....	22	3303.....	3	3935.....	15	9807.....	28	9981.....	50
946.....	24	3600.....	37	4001.....	55	9809.....	28	9982.....	50
948.....	22	3601.....	37	4305.....	3	9810.....	44	9983.....	50
950.....	24	3602.....	37	4667.....	13	9812.....	43	10000.....	18
952.....	22	3603.....	37	5305.....	3	9813.....	44	10001.....	18
956.....	22	3604.....	37	6010.....	55	9816.....	44	10002.....	18
960.....	22	3671.....	19	6013.....	55	9817.....	43	10003.....	20
964.....	22	3703.....	38	8804.....	14	9818.....	44	10004.....	6
968.....	23	3704.....	38	8810.....	61	9820.....	40	10005.....	19
972.....	23	3705.....	38	8812.....	61	9822.....	42	10006.....	18
976.....	23	3706.....	38	8813.....	61	9825.....	43	10008.....	21
980.....	23	3707.....	38	8814.....	61	9828.....	45	10009.....	19
1202.....	60	3708.....	38	8817.....	61	9829.....	45	10010.....	20

Model #	Page	Model #	Page	Model #	Page	Model #	Page	Model #	Page
10200.....	10	10631.....	13	30078.....	39	88553.....	47	97752.....	33
10202.....	10	10632.....	13	30079.....	39	88554.....	47	97754.....	33
10203.....	6	10633.....	13	30406.....	36	88555.....	47	97756.....	33
10204.....	8	10636.....	7	30408.....	36	88556.....	47	97760.....	32
10205.....	6	22610.....	52	304010.....	36	92831.....	42	98001.....	39
10206.....	7	23014.....	52	30411.....	35	97167.....	48	98002.....	39
10207.....	7	24100.....	52	30412.....	35	97168.....	48	98003.....	39
10208.....	10	24120.....	52	30412.....	36	97171.....	46	98004.....	39
10209.....	7	24140.....	52	30413.....	35	97172.....	46	98005.....	39
10210.....	8	28401.....	14	30414.....	35	97173.....	46	98006.....	39
10212.....	6	28402.....	14	30415.....	35	97174.....	46	98007.....	39
10213.....	8	28403.....	14	30428.....	36	97175.....	46	98008.....	39
10214.....	8	28404.....	14	30438.....	37	97176.....	46	98023.....	42
10600.....	13	28405.....	14	30451.....	36	97177.....	46	98025.....	42
10601.....	13	28406.....	14	30452.....	36	97178.....	46	98061.....	39
10602.....	13	28407.....	14	30453.....	36	97179.....	46	98062.....	39
10603.....	13	28408.....	14	30454.....	36	97194.....	48	98063.....	39
10604.....	13	28409.....	14	30455.....	36	97195.....	48	98064.....	39
10605.....	13	28471.....	13	30456.....	36	97196.....	48	98065.....	39
10606.....	13	28472.....	13	30457.....	36	97198.....	48	98066.....	39
10607.....	13	28473.....	13	30458.....	36	97324.....	33	98067.....	39
10608.....	13	28474.....	13	30459.....	36	97325.....	33	99305.....	15
10609.....	13	28475.....	13	30461.....	37	97326.....	33	99306.....	15
10610.....	13	28476.....	13	30462.....	37	97327.....	33	99307.....	15
10611.....	13	28477.....	13	30463.....	37	97328.....	33	99308.....	15
10612.....	13	28492.....	12	39301.....	15	97329.....	33	99309.....	15
10613.....	13	28494.....	12	39302.....	15	97330.....	33	99801.....	15
10614.....	13	28496.....	12	39303.....	15	97332.....	33	99802.....	15
10615.....	13	28498.....	12	39304.....	15	97434.....	33	99803.....	15
10616.....	13	28501.....	20	39305.....	15	97435.....	33	99804.....	15
10617.....	13	28502.....	20	39306.....	15	97436.....	33	99805.....	15
10618.....	13	28503.....	20	39307.....	15	97438.....	33	53517.....	17
10619.....	13	28504.....	20	39308.....	15	97441.....	33	53820.....	17
10620.....	13	28505.....	20	39309.....	15	97442.....	33	54121.....	17
10621.....	13	28506.....	20	39801.....	15	97446.....	33	88551.....	47
10622.....	13	28507.....	20	39802.....	15	97732.....	32	88552.....	47
10623.....	13	30070.....	39	39803.....	15	97734.....	32	88553.....	47
10624.....	13	30071.....	39	39804.....	15	97736.....	32	88554.....	47
10625.....	13	30072.....	39	39805.....	15	97738.....	32	88555.....	47
10626.....	13	30073.....	39	53517.....	17	97740.....	32	88556.....	47
10627.....	13	30074.....	39	53820.....	17	97744.....	32	92831.....	42
10628.....	13	30075.....	39	54121.....	17	97746.....	33	97167.....	48
10629.....	13	30076.....	39	88551.....	47	97748.....	33	97168.....	48
10630.....	13	30077.....	39	88552.....	47	97750.....	33	97171.....	46

PRODUCT INDEX

Model #	Page	Model #	Page
97172.....	46	98002.....	39
97173.....	46	98003.....	39
97174.....	46	98004.....	39
97175.....	46	98005.....	39
97176.....	46	98006.....	39
97177.....	46	98007.....	39
97178.....	46	98008.....	39
97179.....	46	98023.....	42
97194.....	48	98025.....	42
97195.....	48	98061.....	39
97196.....	48	98062.....	39
97198.....	48	98063.....	39
97324.....	33	98064.....	39
97325.....	33	98065.....	39
97326.....	33	98066.....	39
97327.....	33	98067.....	39
97328.....	33		
97329.....	33		
97330.....	33		
97332.....	33		
97434.....	33		
97435.....	33		
97436.....	33		
97438.....	33		
97441.....	33		
97442.....	33		
97446.....	33		
97732.....	32		
97734.....	32		
97736.....	32		
97738.....	32		
97740.....	32		
97744.....	32		
97746.....	33		
97748.....	33		
97750.....	33		
97752.....	33		
97754.....	33		
97756.....	33		
97760.....	32		
98001.....	39		

A series of horizontal lines for taking notes, spanning the width of the page below the header.

Distributed by:



www.sunextools.com

P.O. Box 1233 • Travelers Rest, SC 29690

Sunex Tools® Service: 877.786.3939 • Toll Free: 1.800.833.7869

Fax: 864.834.7954



REF: SXCS190

Rev. 06/04/10